



**Delfin S.r.l.**

Strada della Merla, 49/a  
10036 Settimo Torinese (TO) Italy

Tel. 0039.011.8005500

Fax 0039.011.8005506

[www.delfinvacuums.it](http://www.delfinvacuums.it)

[delfin@delfinvacuums.it](mailto:delfin@delfinvacuums.it)

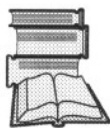
***Industrial vacuum cleaners  
Line: MISTRAL***



**MISTRAL 802  
W-PUMP**



***Operator's and maintenance manual***



**Read this manual carefully before using the vacuum cleaner**

This manual provides all the information needed to use and service your vacuum cleaner. Good operation and durability depend on proper maintenance and careful use.

Before leaving the factory, this particular model has undergone stringent tests to ensure utmost reliability. Always check however to make sure the vacuum cleaner has not been damaged during transport in such a way as to affect operation and safety.

This manual should be considered an integral part of the vacuum cleaner and must be kept together with the unit until this is scrapped. In case of loss of or damage to the manual, ask DELFIN for a new copy.

The technical details contained in this manual are the property of DELFIN and should be deemed of a confidential nature.

Even partial reproduction of the graphic project, the text and the illustrations is legally forbidden.

Some details shown in the illustrations in this manual may be different from those of your vacuum cleaner. Some component parts may have been removed for greater clarity.

For easier reference, this manual is split into sections, identifiable by specific graphic symbols.

The subjects dealt with in this manual are those expressly required by "**Machine Directive 2006/42/CE**" and the technical details shown are those provided by the manufacturer at the time of compilation.

This manual must be kept in a place accessible to all the personnel charged with operating and servicing the vacuum cleaner.

In case of any doubts, always immediately phone the **After-Sales Service**.

The competent Law Court for all disputes is that of TURIN (Italy).



**the manual must be kept with the vacuum cleaner in case of resale!**

© Copyright DELFIN S.r.l.  
Edition 2011

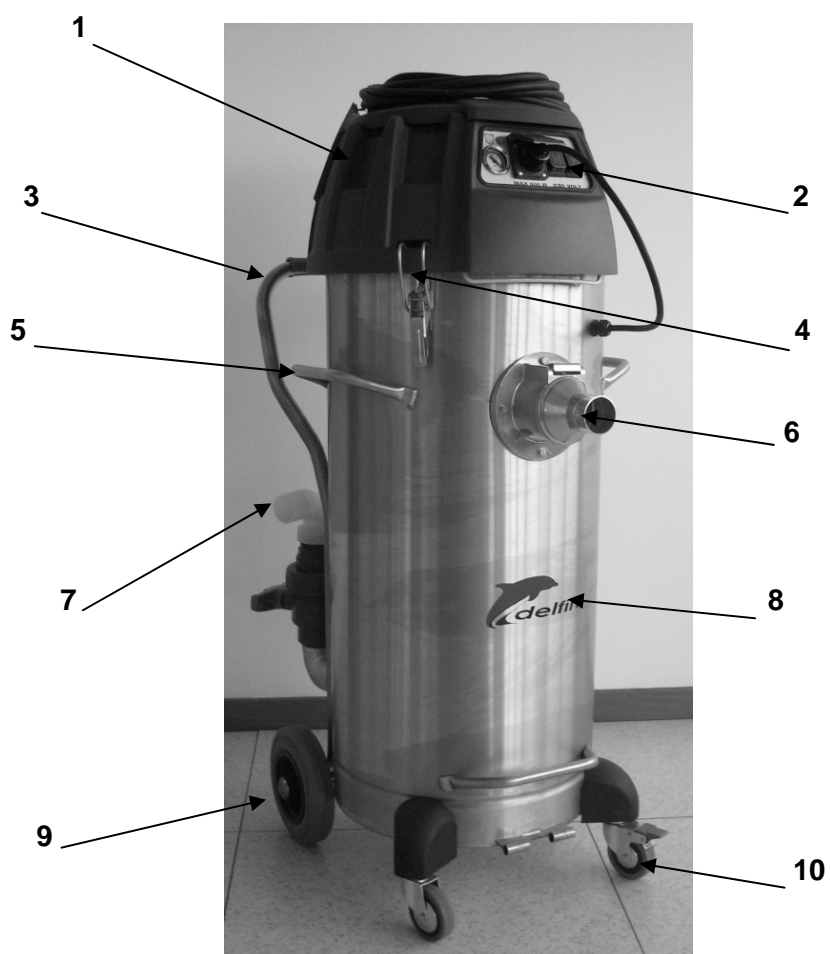
**MOD MISTRAL 802 W-PUMP**

<b>Information section</b>	<b>2</b>
1.1 Identification of main parts	3
1.2 Accessories provided	4
1.3 Identification details of manufacturer	5
1.4 Marking plate	5
1.5 Intended uses	6
1.6 Allowed environmental conditions	6
1.7 Noise level	6
1.8 Storage	6
1.9 Scrapping	6
1.10 Technical details	7
1.11 Warranty	8
<b>Safety section</b>	<b>9</b>
2.1 Safety details	10
2.2 Safety precautions	11
2.3 Safety plates and symbols	14
2.4 Outstanding risks	15
2.5 Applied directives	15
<b>Installation section</b>	<b>16</b>
3.1 Handling	17
3.2 Installation	18
<b>Operation section</b>	<b>20</b>
4.1 Description of controls	21
4.2 Work cycle	22
4.3 releasing and removing the removable container	24
<b>Maintenance section</b>	<b>26</b>
5.1 Informative notes	27
5.2 General safety precautions	27
5.3 maintenance operations	28
5.4 Replacing the filters	29
5.5 Troubleshooting	32
<b>Spare parts section</b>	<b>33</b>
6.1 Recommended spare parts	34



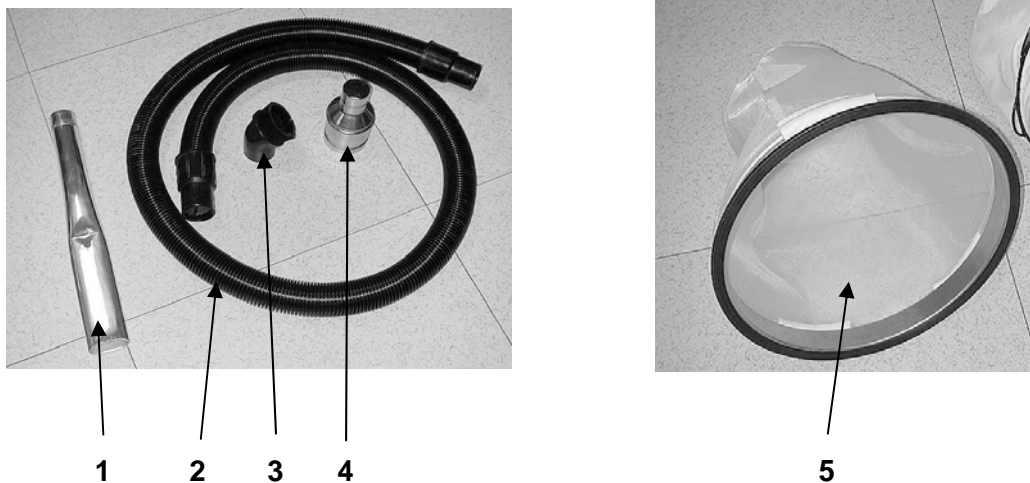
## ***INFORMATION SECTION***

## **1.1 Identification of main parts**



- 1) Suction unit
- 2) ON / OFF switches
- 3) Push handle
- 4) Release fastening
- 5) Lateral handles
- 6) Suction point
- 7) Liquid drainage pipe
- 8) Vacuumed material container
- 9) Fixed castors
- 10) wheels

## **1.2 Accessories provided**



- 1) AA1045 – ALL. LANCE D50x500
- 2) AA2591 – BLACK FLEXIBLE HOSE D50 MT.2,5 CPL WITH PVC CUFFS
- 3) AA2592 - PVC BRUSH D50
- 4) AA2638 – IRON REDUCION D80/50
- 5) AR3479 – COMPLETE FILTER KIT FOR LIQUIDS MTL 602-802


### **1.3 Identification details of manufacturer**

Delfin S.r.l.  
Strada della Merla, 49/a  
10036 Settimo Torinese (TO) - Italy  
Tel. 0039.011.800.55.00  
Fax. 0039.011.800.55.06  
[www.delfinvacuums.it](http://www.delfinvacuums.it)  
[delfin@delfinvacuums.it](mailto:delfin@delfinvacuums.it)

### **1.4 Marking plate**

In compliance with the Machine Directive on vacuum cleaners, the machine is fitted with CE plates.

When contacting the manufacturer or dealer, always quote the details shown on the vacuum cleaner plate.

Str. della MERLA 49/A 10036 SETTIMO T.SE (TO) ITALY	
Tel. 0039 011 800.55.00 - Fax 0039 011 800.55.06	
 manufacturers of industrial vacuums	
CE	
MOD.	<input type="text"/>
S/N	<input type="text"/>
YEAR	<input type="text"/>
50 Hz	<input type="text"/>
60 Hz	<input type="text"/>
FILTER	<input type="text"/>
<a href="http://www.delfinvacuums.it">www.delfinvacuums.it</a>	

## 1.5 Intended uses

These specific vacuum cleaner models have been designed, built and protected for vacuuming dusts and solid materials only, using special filters.



**Important!**

**Always use specific filters for the type of dust or materials to be vacuumed.**

Any other use is considered **IMPROPER**.

The vacuum cleaner is in any case intended for professional industrial use.

## 1.6 Allowed environmental conditions

To ensure the correct operation of the vacuum cleaner, this must be positioned protected against atmospheric agents (rain, hail, snow, fog, dusts in suspension, etc.) with an environmental running temperature between 5°C and 45°C and relative humidity not above 70%.

The work environment must be clean, well-enough lit and devoid of explosive atmosphere.

## 1.7 Noise level

Noise level readings were taken in accordance with the provisions of **Machine Directive 2006/42/CE** standards.

Sound tests performed on this specific vacuum cleaner model have been taken from a distance of 1 meter and from a height of 1,60 meters, showing an acoustic pressure no higher than:

**75 dB (A)**

The vibrations transmitted by the machine are lower than 2,5 m<sup>2</sup>/s.



**Important!**

**Pursuant to articles L.D. 81/08, workers exposed to sound pressure levels above 85 dBA must be protected by special individual protection devices.**



**It is therefore necessary, if such working conditions exist, to provide workers with such approved individual protection devices and to inform them of the risks relating to noise exposure.**

## 1.8 Storage

Remove the filter and clean it, empty the container and store the vacuum cleaner in a place protected against atmospheric agents with a temperature between 0°C and 40°C. Cover with a nylon sheet to prevent accumulation of dust.

## 1.9 Scrapping

In case of scrapping, all the component parts of the vacuum cleaner will have to be disposed of through adequate disposal channels in accordance with applicable legislation. Before scrapping, all plastic and rubber parts will have to be separated from the electrical material. Parts made of plastic, aluminium and steel only may be recycled if collected by special centres.

## 1.10 Technical details

MISTRAL 802 W-PUMP		
<b>Power</b>	<b>W</b>	2.300
<b>Voltage</b>	<b>Volts</b>	230 – 50/60
<b>Max. vacuums rate</b>	<b>mm H<sub>2</sub>O</b>	2.500
<b>Max. air flow rate</b>	<b>M<sup>3</sup>/h</b>	360
<b>Noise level</b>	<b>dB(A)</b>	75
<b>Filter type</b>		Polypropylene
<b>Filter surface</b>	<b>cm<sup>2</sup></b>	7.000
<b>Capacity</b>	<b>L</b>	100
<b>Suction inlet</b>	<b>Ø</b>	80
<b>Dimensions</b>	<b>cm</b>	55 x 65
<b>Height</b>	<b>cm</b>	125

## **1.11 Warranty**

Delfin guarantees this vacuum cleaner model for a period of 24 months from the date of purchase indicated on the tax document at the time of delivery of the vacuum cleaner by the seller.

The warranty shall be invalidated in the event of the vacuum cleaner having been repaired by unauthorised third parties or of equipment or accessories being used that have not been supplied by Delfin or which have not been recommended or approved by Delfin or whose serial number has been removed or altered during the warranty period.

Delfin undertakes to repair or replace, free of charge, those parts which, during the warranty period show manufacturing faults. Repairs shall be made in the Delfin facilities only or in a Technical Assistance Centre indicated by us and machines shall be sent to us carriage free (transport costs to be paid by the user, unless otherwise agreed).

The warranty does not cover any cleaning of working parts.

Faults not directly attributable to materials or manufacture shall be examined only in our facility or in a Technical Assistance Centre indicated by us. If claims appear unjustified, all the costs relating to repair and/or replacement of parts shall be charged to the buyer.

The purchase tax document shall be shown to the technical personnel making the repairs and must accompany the vacuum cleaner dispatched for repair.

The warranty does not cover: accidental damage, caused by transport or carelessness or inadequate treatment, or improper use not in compliance with the instructions in the instruction manual, or in any case by occurrences not dependent on normal operation or use of the vacuum cleaner. Delfin declines all responsibility for any damage to persons or things caused by bad or improper use of the vacuum cleaner.

All disputes shall be referred to the Law Court of Turin (Italy).

The manufacturer declines all liability in the following cases:

- Failure to send the warranty Certificate
- Failure to follow the instructions
- Use of non-original spare parts
- Failure to service the machine properly



## ***SAFETY SECTION***

## 2.1 Safety details

The person in charge of safety shall be responsible for informing workers about the risks associated with vacuum cleaner operation.

The obligation also exists of training workers so they are able to protect themselves and others.

Failure to observe basic safety regulations and precautions could cause accidents during vacuum cleaner operation, maintenance and repair. Accidents can often be avoided by recognising potentially dangerous situations before these occur. Operators should be aware of potential hazards and be trained and skilled enough. They should also have the tools necessary to perform these duties properly.

Delfin shall under no circumstances be deemed liable for accidents or damage caused by use of the vacuum cleaner by personnel not properly trained or who use it in an improper manner, as well as by even partial failure to comply with the safety regulations and intervention procedures indicated in this manual.

The safety precautions and warning notices are indicated in this manual and on the product.

Unless these hazard messages are heeded, the operator could become involved in accidents with serious consequences for him/herself and for other people.

The safety messages are highlighted by the following symbols:



---

**Attention!**

**Unless these messages are heeded, operator injuries could occur.**

---



---

**Warning!**

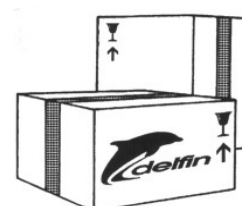
**Unless these messages are heeded, vacuum cleaner damage could occur.**

---

Delfin cannot foresee all possible circumstances capable of representing a potential hazard. The warnings in this manual and on the products should not therefore be deemed exhaustive. In the event of tools, procedures, work or machining methods being used that are not explicitly recommended by Delfin, make sure no hazards exist for operators and others.

**Only ever use original DELFIN spare parts.**

**Delfin declines all liability in the event of non-original spare parts being used.**



**MOD. MISTRAL 802 W-PUMP**

## **2.2 Safety precautions**



### **Important!**

The following indications are, by themselves, not enough to fully protect against all the hazards that could arise during vacuum cleaner operation. These will have to be integrated with common sense and the experience of the operator, both of which are crucial factors for preventing accidents. Each section of this manual lists further specific safety precautions for the various operations.

**Maintenance jobs must always be performed with the power plug detached from the power point.**

The employer must inform and train the user according to the provisions of applicable laws.

Before using the machine, prepare and train yourself by reading this manual carefully. Use of the machine by untrained and unauthorised persons is forbidden. Using the machine to vacuum toxic substances is forbidden unless this has been equipped with special filters required for the specific type of dusts. Such filters must be explicitly requested by you.

Do not vacuum flammable materials or substances or which could cause explosions (fuels, solvents, etc.). To vacuum such materials, the machine must be built with Anti-explosion Motor and Electric System and this must be requested by you explicitly.

Do not vacuum corrosive substances unless the machine is equipped with containers suitable for this purpose (Stainless-steel AISI 304).

Use of the machine without the supplied filters is not recommended.

If the filters are correctly fitted, the machine will not eject any objects.

If the machine is used to vacuum toxic-harmful substances, the container must be emptied and the filters cleaned using adequate individual protection devices, selected according to the type of substances to be vacuumed.

Never rest miscellaneous materials on the horizontal protection guard. The machine casing containing moving parts must not be removed by the user. When using the machine, mind other people, especially children. Use the machine cautiously on slopes and ramps. Do not change direction on gradients.

Make sure the parked machine remains stable by operating the braked wheel.

During cleaning operations, maintenance jobs or when changing parts, the starter switch must be off and the machine must be disconnected from the power mains by removing the cable from the socket. Only skilled persons should carry out repairs.

During use, mind the power supply cables and avoid crushing or pulling these. Periodically check the mains power cable to ensure this is not damaged.

In the event of the cable being damaged, the machine must not be used. In the event of the cable, plugs or couplings being replaced, make sure these are protected against water spray and check mechanical strength.

Never pull the machine by means of the power cable and the vacuum pipe.

Motor brushes and burnt-out fuses must be replaced by DELFIN or authorised dealers. Always use original spare parts.

The user is responsible for disposing of vacuumed substances in accordance with applicable laws. After 10 years of use, we recommend sending the machine for a complete overhaul to DELFIN srl.

The machine is supplied with: instruction manual, Exploded Spare Parts drawing, Test Sheet, Warranty Slip, Approval Certificate.

In the event of Customers fitting a tool to the machine not supplied by DELFIN , make sure the safety conditions required by **Machine Directive 2006/42/CE** are complied with and in any event, DELFIN is unable to accept liability for any problems arising from use of such tool.

The vacuum cleaner must not be operated in a corrosive or explosive environment.

Always make sure the vacuum cleaner is free of all foreign materials such as debris, oil, equipment and other objects that could affect operation and cause injury to persons.

Avoid using flammable or toxic solvents such as petrol, benzene, ether and alcohol for cleaning.

Avoid prolonged contact with solvents and inhaling their vapours. Avoid use close to open flames or sources of heat.

Never use the vacuum cleaner without the filter.

Do not vacuum lit cigarette ends. The filter could be damaged. Do not vacuum petrol or flammable liquids in general.

Make sure all the guards and protection devices are in place and that all the safety devices are in place and working properly.

Do not wear loose or hanging clothing such as ties, scarves or torn garments that could become trapped and be sucked up by the cleaner.

Do not open the vacuum container with the machine running.

The manual should always be kept handy for reference so the operating cycle can be checked every time there are doubts.

In the event of this manual being lost or damaged, ask DELFIN for a new copy.

Structural damage and improper alterations or repairs could change the protection capacity of the vacuum cleaner and therefore cancel this certification.

Any alterations to the appliance must only be made by Delfin engineers.

During maintenance jobs, affix a notice to the appliance indicating **"MACHINE BEING SERVICED, DO NOT START"**.

Climbing on the cleaner is forbidden. Never touch electric wires, switches, buttons, etc. with wet hands.

Before connecting to the power mains, make sure the power voltage and frequency are those shown on the machine plate.

Make power connections to a mains supply with efficient earth system.

In the event of an extension being used, make sure this is in perfect condition, marked CE and that the cross section of the cable is suitable for the vacuum cleaner power input.

When restoring original working conditions, the appointed personnel should make sure that at the end of the operating procedure, proper vacuum cleaner operation safety conditions are restored, especially the safety devices and the protective guards.

Only adult persons should use the vacuum cleaner.

During vacuuming operations, always brake the vacuum cleaner using the special revolving wheel lock.

## 2.3 Safety plates and symbols

Plates are affixed to the vacuum cleaner showing safety symbols and/or messages.



**Important!**

Make sure all the safety messages are legible.

Clean these with a cloth, soap and water. Do not use solvents, diesel fuel or petrol.

Replace the damaged plates with new ones supplied by Delfin.

If a plate is affixed to a replaced part, make sure a new plate is affixed to the new part.



**Important!**

Read the operator's and maintenance manual carefully before using the cleaner or doing any maintenance jobs.

**IMPORTANTE**

DO NOT BREATHE IN INFLAMMABLE  
AND/OR EXPLOSIVE LIQUIDS OR  
POWDERS



**Important!**

Risk of crushing upper limbs while fitting and locking the material container on the vacuum cleaner.

Never place hands between the material container and vacuum cleaner while locking.

Do not place hands on sides of container near the guide pins while locking.

Perform the container locking operation by means of the levers located on the side, **USING BOTH HANDS!!**

## **2.4 Outstanding risks**

Careful analysis of risks performed by the manufacturer and stored in the technical file has made it possible to eliminate most of the risks associated with vacuum cleaner operation.

The manufacturer advises carefully following the instructions, procedures and advice contained in this manual as well as applicable safety regulations, including the use of the envisaged protection devices, both those integrated in the cleaner and individual.

Outstanding risks associated with the vacuum cleaner could be:

***Electrical maintenance risks caused by the need to work under power.***

Pursuant to **Presidential Decree 81/08**, only trained personnel should work on the machine with the power supply connected and this must have double earth insulation.

***Risk of improper use in the presence of explosive and flammable substances.***

The vacuum cleaner must not be used in environments containing substances in the form of liquids that could vaporise at room temperature and flammable dusts and gas

***Risks of operation in humid environments.***

Keep to the limits shown in this manual at chap. 1.6 Allowed environmental conditions.

***Risk of erroneous interpretation of the safety pictograms.***

Having identified the various outstanding risks, the manufacturer has affixed to the cleaner a number of hazard labels in compliance with regulations relating to the graphic symbols to be used. The user must immediately replace any safety plates that become illegible due to wear or damage.



**Important!**

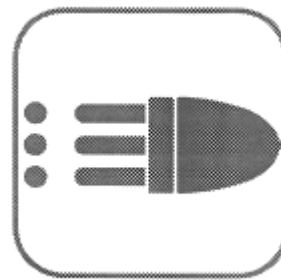
**Removing the safety plates on the vacuum cleaner is strictly forbidden. The manufacturer declines all liability in relation to vacuum cleaner safety in the event of failure to comply with the above indications.**

---

## **2.5 Applied directives**

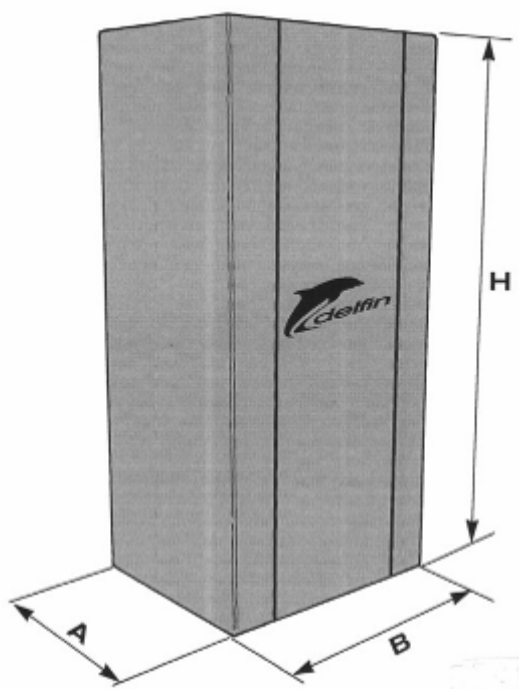
The following directives apply to the vacuum cleaner described in this manual:

- **2006/42/CE Machine Directive**
- **2004/108/CE Electromagnetic compatibility directive**
- **2006/95/CE Low-voltage directive**



## ***INSTALLATION SECTION***

### 3.1 Handling



	A (cm)	B (cm)	H (cm)	Weight (package included) Kg
<b>MTL 802 W-PUMP</b>	<b>56</b>	<b>66</b>	<b>140</b>	<b>55</b>

The machine is supplied in a strong cardboard box secured with straps.

Transport the package using a fork-lift truck of adequate lifting capacity and make sure it is stable and that weight is properly distributed on the forks.

Before starting to move, make sure the transit area is free and that there are no moving objects on the packaging.

During movement, keep the load low for greater stability and safety.

When starting up the vacuum cleaner, move this by means of the wheels supplied.

The appliance must never be moved using fork-lift trucks or other equipment that lifts it off the floor.

If for any reason the need arises to lift and transport the vacuum cleaner, this operation must be performed under the responsibility of the user. The user is therefore invited to secure the load as he best thinks fit to ensure the operation is performed in total safety.

## 3.2 Installation

**Caution!**

**Before installing the vacuum cleaner, carefully make a sight check to pinpoint any damage suffered during transport.**

---

In the event of any component parts being damaged, do not proceed with installation. Notify the manufacturer and reach an agreement on how to proceed.

The vacuum cleaner already features a suction filter.

Fit the accessory required for the type of vacuuming operation on the opposite end of the hose.



**Note:** No standard accessories (reducers, hoses, nozzles) are included with the vacuum; accessories must be specified and ordered separately.

---

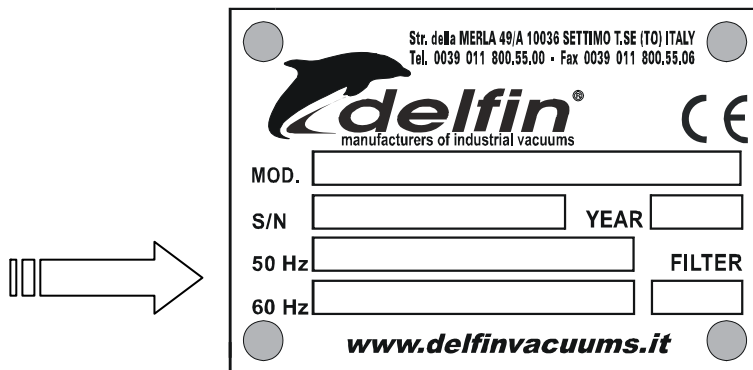
**Contact your dealer for information relating to the different types of OPTIONAL accessories available for this specific vacuum cleaner model.**

---

Fit the supplied connector on the pipe union.



Make sure the power supply corresponds to the voltage and frequency indicated on the vacuum cleaner plate.

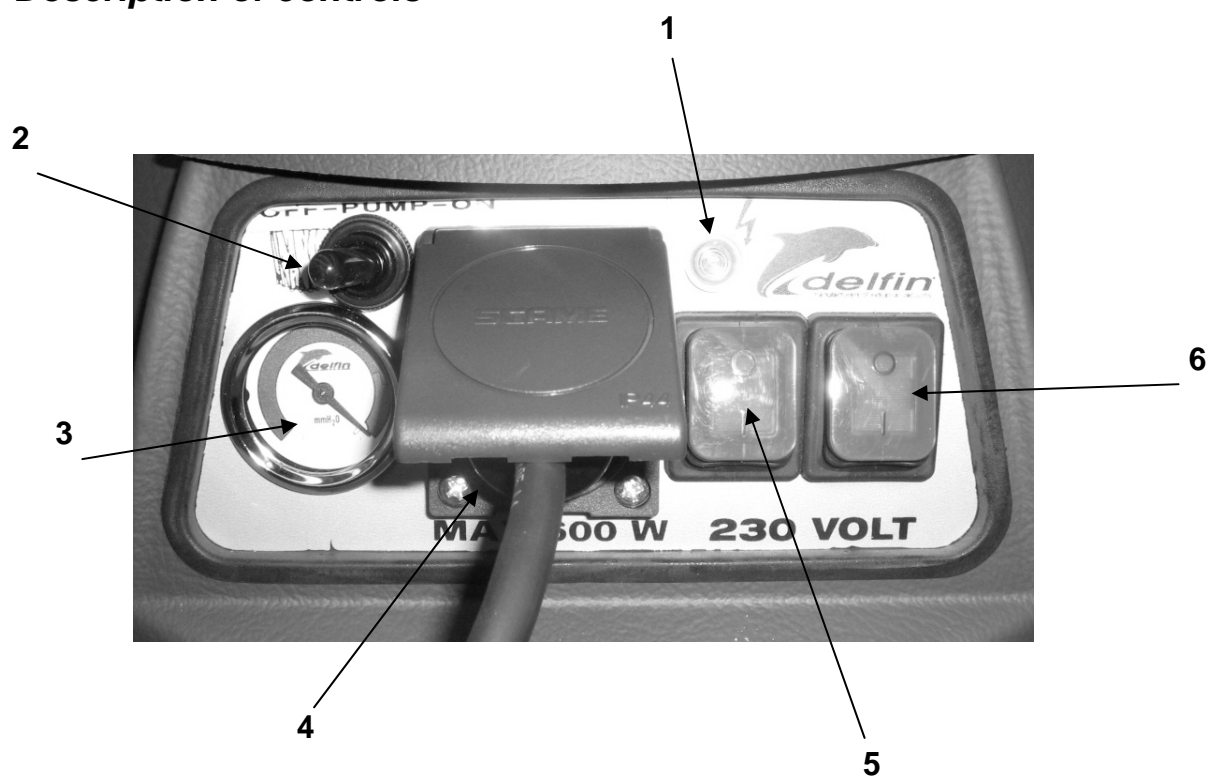
**Important!**

**Do not fit the plug in the power socket with wet hands.**

In the event of an extension being used, make sure this is in perfect condition, in compliance with EC standards and with cable cross section suitable for the power input of the vacuum cleaner.



## ***OPERATION SECTION***

**4.1 Description of controls**

1. green power on light;
2. Pump Start/Stop switch;
3. Vacuummeter;
4. Socket to connect the pump;
5. Start/Stop switch - motor 1;
6. Start/Stop switch - motor 2.

## 4.2 Work cycle

**Important!**

**Before fitting the plug, make sure the power voltage corresponds to that on the CE marking plate.**

---

- Make sure the power plug is correctly fitted in the power socket.
- Make sure the flexible hose is properly fitted and locked in the vacuum pipe union.
- Make sure the power cable and any extension used are integral and in perfect condition.
- Block the vacuum cleaner by means of the retainer provided.



- Grip one end of the flexible hose complete with selected accessory.
- Press the START button and start vacuuming.
- To stop the vacuum cleaner, press the STOP button.

**Caution!**

**Before switching the vacuum cleaner back on, make sure the motors have come to a complete halt.**

---



- After finishing work, disconnect the vacuum cleaner from the power socket.

To move the vacuum cleaner, use the large handle.



### **Important!**



**The vacuum can be moved only on flat ground !**

**If the vacuum is moved on inclined grounds, you can risk to lose the control, because of the weight and to damage persons or things.**

---

### **Caution!**



**During vacuuming, avoid rolling up or bending the flexible hose.**

---

### **4.3 Releasing and removing the removable container**

Stop the vacuum motors by pressing the relevant STOP buttons.



- Be sure to correctly Insert the plug in the provided pump socket.



- Block the machine by means of the provided retainer.



- Spin vertically the lever located on the back side of the machine.



- Switch on the pump to empty the container.



Empty the contents of the container into a special waste disposal container in accordance with laws applicable in the country where the vacuum cleaner is used.



### Important

**Perform the container release operation by means of the levers located on Empty the contents of the container into a special waste disposal container in accordance with laws applicable in the country where the vacuum cleaner is used.**



## **SEZIONE MANUTENZIONE**

**Caution!**  
Special maintenance jobs on the vacuum cleaner must only be done by the manufacturer's skilled technicians.

## **5.1 Informative notes**

This section describes the control and special maintenance operations crucial for keeping the vacuum cleaner in perfect working condition.

Any other jobs which might be necessary to eliminate operating faults must be expressly authorised by the manufacturer. In such cases, always notify the identification details of the cleaner.

In the case of major repairs, it is best to contact an authorised dealer, whose skilled personnel, backed by all the technological experience relating to the original factory construction methods, are always available and ready to promptly intervene.

## **5.2 General safety precautions**

Maintenance jobs must always be performed by skilled technicians, trained to carry out their specific jobs. In the case of this machine, these are:

- *Mechanical maintenance*
- *Electrical maintenance*

The Safety Manager has the precise duty of determining the professional capacities and skills of such persons.

Before doing any maintenance job, the safety manager must:

- Make sure there are no unauthorised persons in the work area.
- Make sure the necessary tools are on hand and that these are in good condition.
- Make sure that lighting is adequate and, if necessary, provide 24-V portable lamps.
- Make sure the maintenance engineer is equipped with all approved individual protection devices needed for the specific operation (gloves, eyewear, shoes, etc.).
- Make sure the maintenance engineer has carefully read the instructions contained in this manual and knows how the vacuum cleaner works.

Before carrying out a maintenance job, the maintenance engineer must:

- Disconnect the plug from the power socket.

Work done on motors or other electrical component parts must only be performed by a specifically trained electrician, authorised by the Safety Manager.

Always use tools that are in perfect condition and specifically made for the operation to be done. The use of unsuitable tools or tools not in good condition could cause serious damage.

### **5.3 Maintenance operations**

**Important!**

**All the described operations must be done with the plug disconnected from the power socket.**

**Before starting any maintenance or cleaning job, always wear adequate protective clothing, eyewear and/or gloves according to the type of job to be done.**

---

For smooth vacuum cleaner operation, a number of controls are best made periodically:

- Check to see whether the filter is worn or has become too permeable.
- Make sure the sealing gaskets of the motor head base, of the filter-holder ring and of the container are working efficiently.
- The electrical parts (plugs, switches, cables, etc.) must not be faulty.
- The screws and nuts must always be tight.
- Make sure the container is not overfull. This should be emptied when the vacuumed material has reached 3/4 of maximum capacity.
- Check the integrity of the flexible vacuum hose and accessories to be used.
- If the flexible hose is perforated, the power of the cleaner will be reduced and dust and liquids will leak into the environment.

**Caution!**

**All maintenance and repair jobs must be performed directly by DELFIN or its authorised dealers.**

---

## 5.4 Replacing the filters

To replace the filters, proceed as follows:

- Turn off the vacuum cleaner by pressing the motor **O** buttons.
- Disconnect the vacuum cleaner plug from the power socket.



**Important!**  
**Wear individual protection devices.**

---



Block the vacuum cleaner by means of the stop.



Remove the plug from the pump socket.



Release the stops that hold the head.



Lift the head by means of the handles provided and rest this on a support bench.



Remove the fibre filter and if necessary replace it with a new one.



Remove the floating device.



Remove the filter.

**Important!**  
**To lift the head, two people are required.**



Loosen the clamp and remove the support ring with seal.

Fit the new filter and tighten with the clamp. Fit the entire assembly in the container. Fit the float and motor head and secure with the two safety retainers.

**Important!**

**All the material trapped by the filter and the filter itself must be disposed of through authorised channels in the country where the vacuum cleaner is used.**

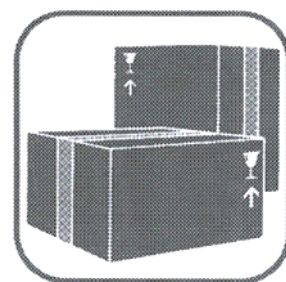
---

## 5.5 Troubleshooting

Fault found	Possible fault	Recommended remedy
<b>The cleaner fails to start.</b>	No power.	Check the power mains supply. Check the integrity of the plug and power cable.
	Thermal magnetic switch tripped	Reset the thermal magnetic switch.
<b>Dust is leaking out</b>	Perforated vacuum pipe.	Replace the pipe.
	Perforated filter.	Replace the filter.
	Filter unsuitable for type of job.	Fit a suitable filter for the type of material to be vacuumed.
<b>The vacuum cleaner does not work as it should.</b>	Pipe perforated or blocked.	Check the pipe and, if necessary, replace.
	Container full	Empty container.
	Filter blocked.	Replace filter.
	Seals worn.	Clean the filter and if necessary change it.
	Air leak.	Check for any air leaks out of closing fasteners, tightening screws, container or filter chamber.
<b>Motor very noisy.</b>	Contact DELFIN after-sales.	


**Caution!**

For any other problems, contact the DELFIN after-sales service.



## ***SPARE PARTS SECTION***

**6.1 Recommended spare parts**

Description	Code
BY-PASS MOTOR 240V 50/60HZ 1150W (LAMB ELECTRIC)	AA2783
FLOATING DEVICE SEAL (D.120 THICKNESS.3 MM)	AR2553
METAL FILTER-HOLDER CLAMP Ø420 MTL (8MM/1310)	AR3471
PPL FILTER Ø420 MTL WD	AR3474
FIBER FILTER MTL WD	AR3475
FILTER-HOLDER SEAL Ø420 MTL	AR3485



FAX

**Delfin srl**  
Strada della Merla, 49/a  
10036 Settimo Torinese (TO) – Italy  
Tel. 0039.011.8005500  
Fax 0039.011.8005506

Page \_\_\_\_\_ of \_\_\_\_\_

**IMPORTANT: type or complete in block capitals**

Date \_\_\_\_\_

**SPARE PARTS ORDER FORM**

SENT BY \_\_\_\_\_ TEL \_\_\_\_\_

<b>DESTINAZIONE DEI RICAMBI</b>	<b>ADDRESS</b> _____
	<b>LOCALITY</b> _____ <b>PROV</b> _____
	<b>NACIONALITY</b> _____ <b>TEL</b> _____

MODEL	PART NO.	TAB.	PART CODE
DESCRIPTION			Qty

---

MODEL	PART NO.	TAB.	PART CODE
DESCRIPTION			Qty

---

MODEL	PART NO.	TAB.	PART CODE
DESCRIPTION			Qty

---

MODEL	PART NO.	TAB.	PART CODE
DESCRIPTION			Qty

---

MODEL	PART NO.	TAB.	PART CODE
DESCRIPTION			Qty

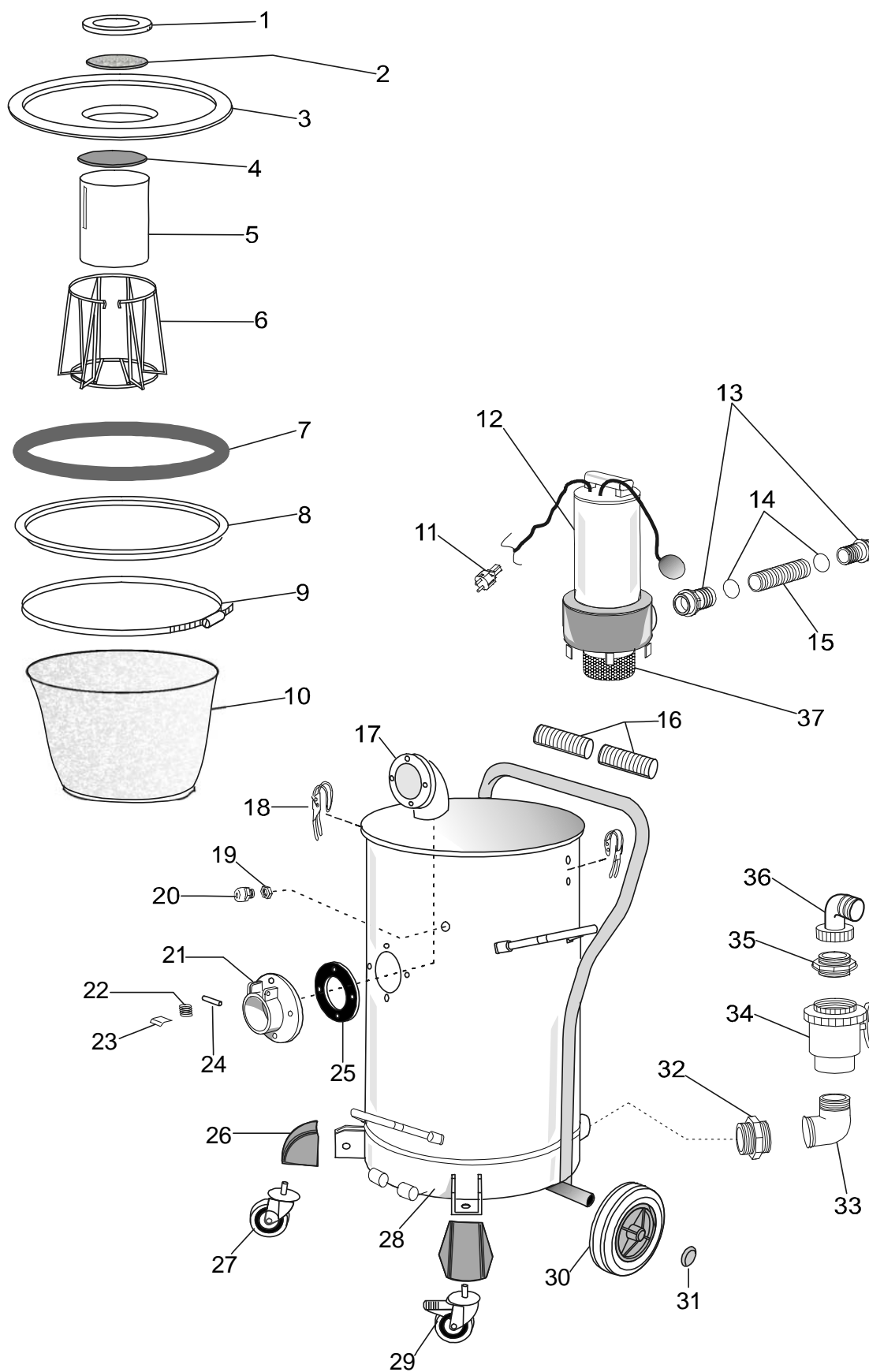
---

MODEL	PART NO.	TAB.	PART CODE
DESCRIPTION			Qty

---

MODEL	PART NO.	TAB.	PART CODE
DESCRIPTION			Qty

## 1.1 MODEL MTL 802 W-PUMP

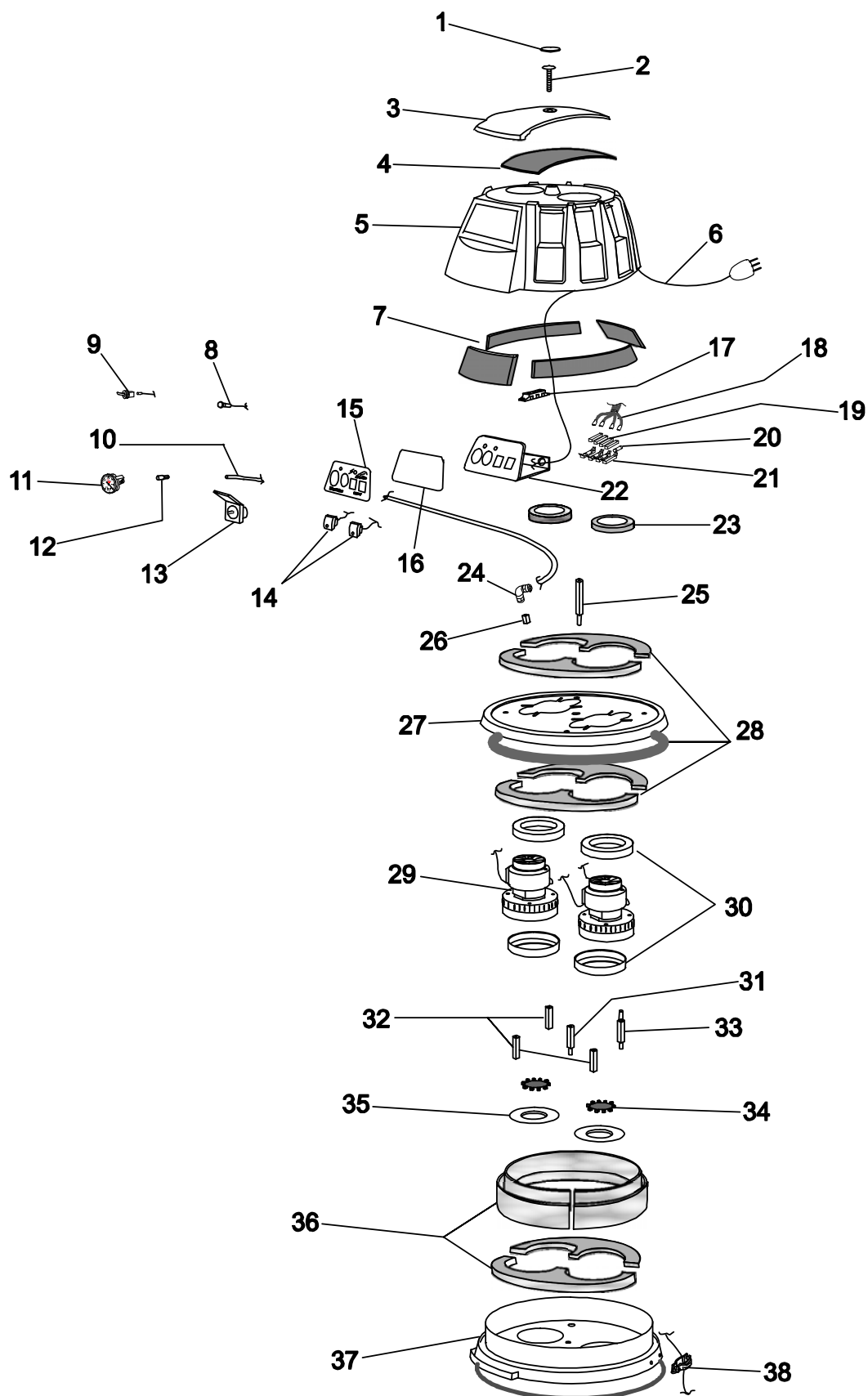




## 1.1 MODEL MTL 802 W-PUMP

Ref.	Code	Q.ty	Description
1	AR3590	1	Fondello filtro-fibra MTL601-2
2	AR3475	1	Filtro fibra MTL WD
3	AR3589	1	Ciclone galleggiante MTL
4	AR2553	1	Guarn.galleggiante (mousse adesiva D.120 Sp.3)
5	AR2015	1	Galleggiante
6	AR2384	1	Gabbia fluteur MTL W-D (plastificata)
7	AR3485	1	Guarn.reggifiltro D420 MTL
8	AR3484	1	Anello reggifiltro D420 MTL
9	AR3471	1	Fascetta fermafiltro D.420 MTL (8MM/1310)
10	AR3474	1	Filtro PPL D420 MTL WD
11	AR4885	1	Spina 16A SCHUKO nera
12	AR4174	1	Pompa immersa DOMO 10VX/B 220/240V 50 Hz
13	AR2231	2	Portagomma diritto nylon 2"M/50
14	AR4115	2	Fascetta D.50/70
15	AA1016	0,40	Tubo antiolio D50
16	AR3160	2	Impugnatura plast.carr W/D
17	AR2415	1	Deflettore pressofuso
18	AR2002	2	Chiusura a gancio
19	AR2192	1	Dado poliamide PG 11 nero
20	AR2217	1	Pressacavo PG 11 nero
21	AR2413	1	Bocchettone D80 pressofuso
22	AR2417	1	Molla saltarello
23	AR2418	1	Saltarello bocchettone pressof
24	AR2416	1	Spina bocch.pressofuso
25	AR3491	1	Guarn.bocchettone pressofuso MTL
26	AR3576	2	Copriruota MISTRAL
27	AR3578	1	Ruota D80 EGA PIV. MTL
28	AR4165X	1	Contenitore D420 H855 MTL inox Wet-Pump
29	AR3577	1	Ruota D80 EGA PIV.C/FR MTL
30	AR3453	2	Ruota D200 PMB grigia MTL W-D
31	AR2278	2	Anello capped D20
32	AR4355	1	Vite doppia da 2" in ghisa zincata
33	AR4378	1	Raccordo curvo M/F 2"
34	AR4377	1	Rubinetto sfera PVC acqua 2"
35	AR2551	1	Vite doppia PVC 2"
36	AR4055	1	Portagomma curvo nylon 2-50
37	AR4285	1	Filtro aspirazione pompa sommersa

## 1.2 MODEL MTL 802 W-PUMP





## 1.2 MODEL MTL 802 W-PUMP

Ref.	Code	Q.ty	Description
1	AR3512	1	Logo adesivo delfin resinato testata
2	AR3513	1	Vite TCEI 8X25
3	AR3514	1	Calotta testata MTL
4	AR3515	1	Insonorizz.calotta testata MTL
5	AR3516	1	Coperchio testata MTL 351-2DS
6	AR2029IT	1	Cavo aliment.3X2.5 16A ITALIA (10 Mt.)
6A	AR2029	1	<b>Cavo aliment.3X2,5 16A SCHUKO (10 Mt.) A RICHIESTA</b>
7	AR3519	1	Serie 6 insonor. cop.testata MTL
8	AR3517	1	Spia verde aliment. MTL + testate ABS
9	AR2024	1	Interruttore monofase
10	AR3898	0,35	Tubo RILSAN D6
11	AR3524	1	Vuotometro D.40 AIR - MTL - ABS
12	AR3314	1	Raccordo rapido dritto G1/8F D6
13	AR3525	1	Presa SCHUKO IP44-10/16A
14	AR4088	2	Interruttore bipol.luminoso rosso
15	AR3520	1	Etichetta plcb pan.portastr.MTL 351-352
16	AR3528	1	Guarn. pannello strumenti MTL
17	AR3522	1	Morsettiera MTL
18	AR4183	1	Kit filatura testata MTL W-D 2 motori
19	AR2501	4	Cappuccio nero coprifusibile
20	AR2496	4	Fusibile 10A 5x20 CF I.I.
21	AR4639	4	Portafusibile 16A 250V
22	AR3529	1	Pannello porta strumenti
23	AR4085	2	Anello raffreddamento gomma stamp.serie ABS
24	AR3342	1	Raccordo rapido a gomito girev. G1/8 M - D6
25	AR3532	1	Distanziale testata MTL 352 DS (Coperchio)
26	AR3533	1	Manicotto F/F 1/8"
27	AR3534	1	Fermamotori MTL
28	AR3535	1	Serie 5 insonor. fermamotori MTL
29	AA2783	2	Motore BP 240V 50/60Hz 1150W (Lamb Electric)
30	AR2252	4	Guarnizione "L" D145X5 H15
31	AR3537	1	Dist. testata monofase (Fermamotori, centrale)
32	AR3536	3	Dist. testata monofase (Fermamotori, esterno)
33	AR3538	1	Dist. testata monofase (Fermamotori, c/pass. aria)
34	AR3539	2	Valvola fondello MTL
35	AR3540	2	Fondello aperto motori MTL
36	AR3542	1	Serie 4 insonor. basamento MTL
37	AR3543	1	Basamento MTL
38	AR3544	1	Supporto fermacavo SBMMM932



Distributor: