



Delfin srl
Strada della Merla, 49/a
10036 Settimo Torinese (TO) Italy
Tel. 0039.011.8005500
Fax 0039.011.8005506
www.delfinvacuums.it
delfin@delfinvacuums.it

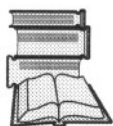
MISTRAL industrial vacuum cleaners



MTL 501 WD

MTL 802 WD

Operator's and maintenance manual



Read this manual carefully before using the vacuum cleaner

This manual provides all the information needed to use and service your vacuum cleaner. Good operation and durability depend on proper maintenance and careful use.

Before leaving the factory, this particular model has undergone stringent tests to ensure utmost reliability. Always check however to make sure the vacuum cleaner has not been damaged during transport in such a way as to affect operation and safety.

This manual should be considered an integral part of the vacuum cleaner and must be kept together with the unit until this is scrapped.

In case of loss of or damage to the manual, ask **DELFIN** for a new copy.

The technical details contained in this manual are the property of **DELFIN** and should be deemed of a confidential nature.

Even partial reproduction of the graphic project, the text and the illustrations is legally forbidden.

Some details shown in the illustrations in this manual may be different from those of your vacuum cleaner. Some component parts may have been removed for greater clarity.

For easier reference, this manual is split into sections, identifiable by specific graphic symbols.

The subjects dealt with in this manual are those expressly required by "Machine Directive EEC 98/37" and the technical details shown are those provided by the manufacturer at the time of compilation.

This manual must be kept in a place accessible to all the personnel charged with operating and servicing the vacuum cleaner.

In case of any doubts, always immediately phone the After-Sales Service.

The competent Law Court for all disputes is that of TURIN (Italy).



This manual must be kept with the vacuum cleaner in case of resale!

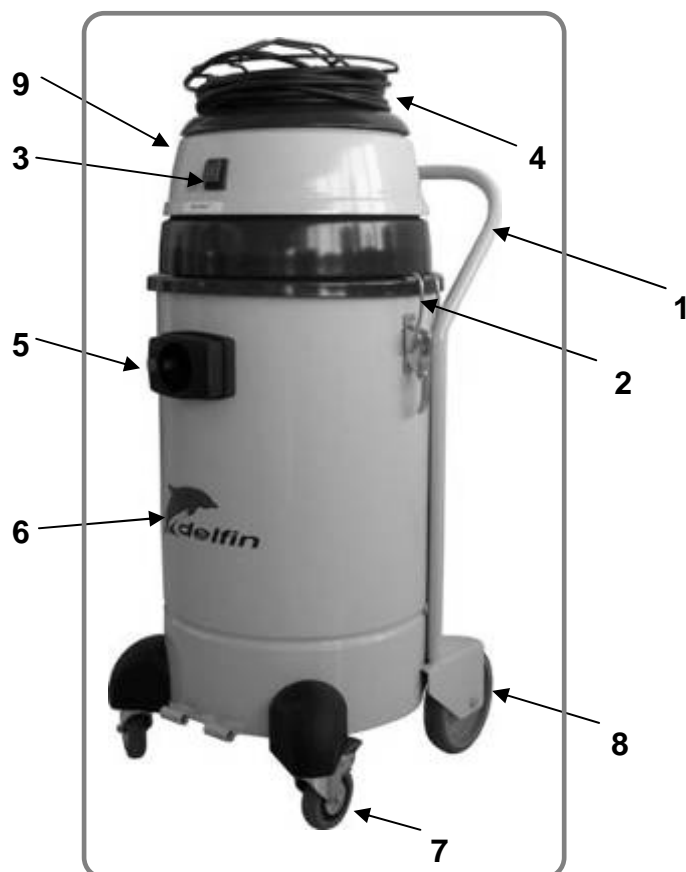
Information section	1
1.1 Identification of main parts	2
1.2 Accessories provided	4
1.2.1 Optional accessories	6
1.3 Identification details of manufacturer	7
1.3 Marking plate	7
1.4 Intended uses	8
1.5 Allowed environmental conditions	8
1.6 Noise levels	8
1.7 Storage	8
1.8 Scrapping	8
1.9 Technical details	9
1.9 Warranty	10
Safety section	11
2.1 Safety details	12
2.2 Safety precautions	13
2.3 Safety plates and symbols	16
2.4 Outstanding risks	17
2.5 Applied directives	17
Installation section	18
3.1 Handling	19
3.2 Installation	20
Operation section	22
4.1 Description of controls	23
4.2 Work cycle	24
4.3 Emptying the container	26
Maintenance section	29
5.1 Informative notes	30
5.2 General safety precautions	30
5.3 Maintenance operations	31
5.4 Replacing the filters	32
5.5 Troubleshooting	34
Spare parts section	36
6.1 Recommended spare parts	37



INFORMATION SECTION

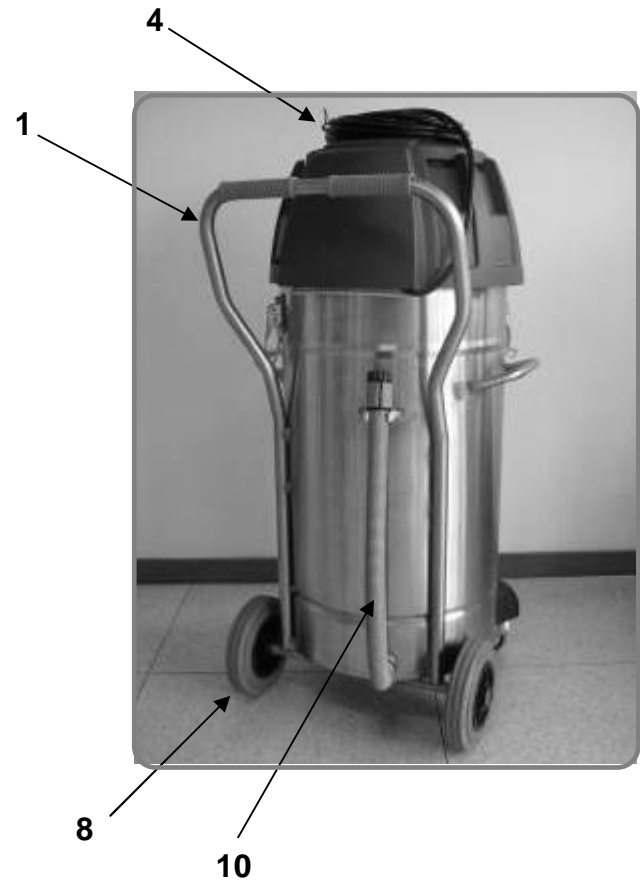
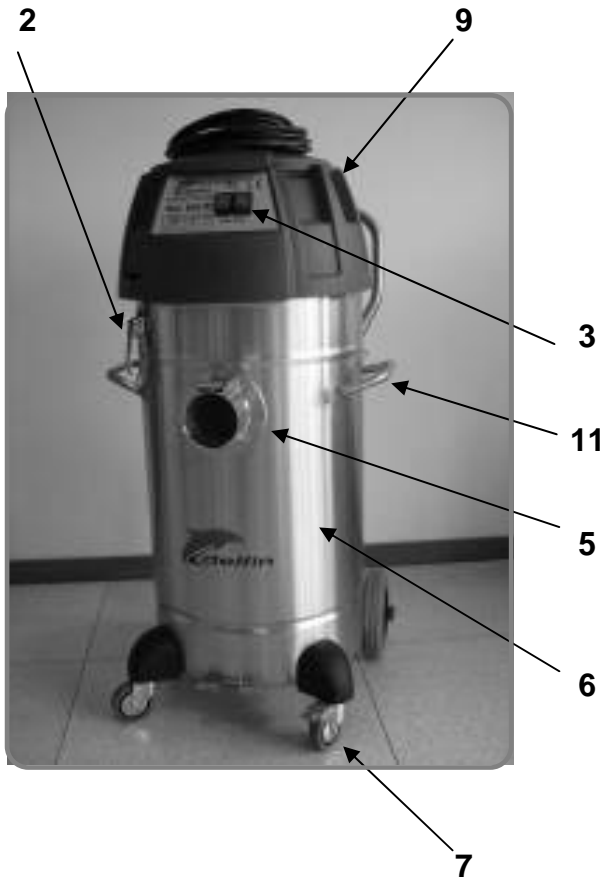
1.1 Identification of main parts

Model 501 WD



- 1) Push handles
- 2) Cover release fasteners
- 3) Controls
- 4) Power cable with plug
- 5) Suction pipe coupling point
- 6) Container for vacuumed material
- 7) Wheels
- 8) Fixed castors
- 9) Motor protection cover
- 10) Liquid drainage pipe

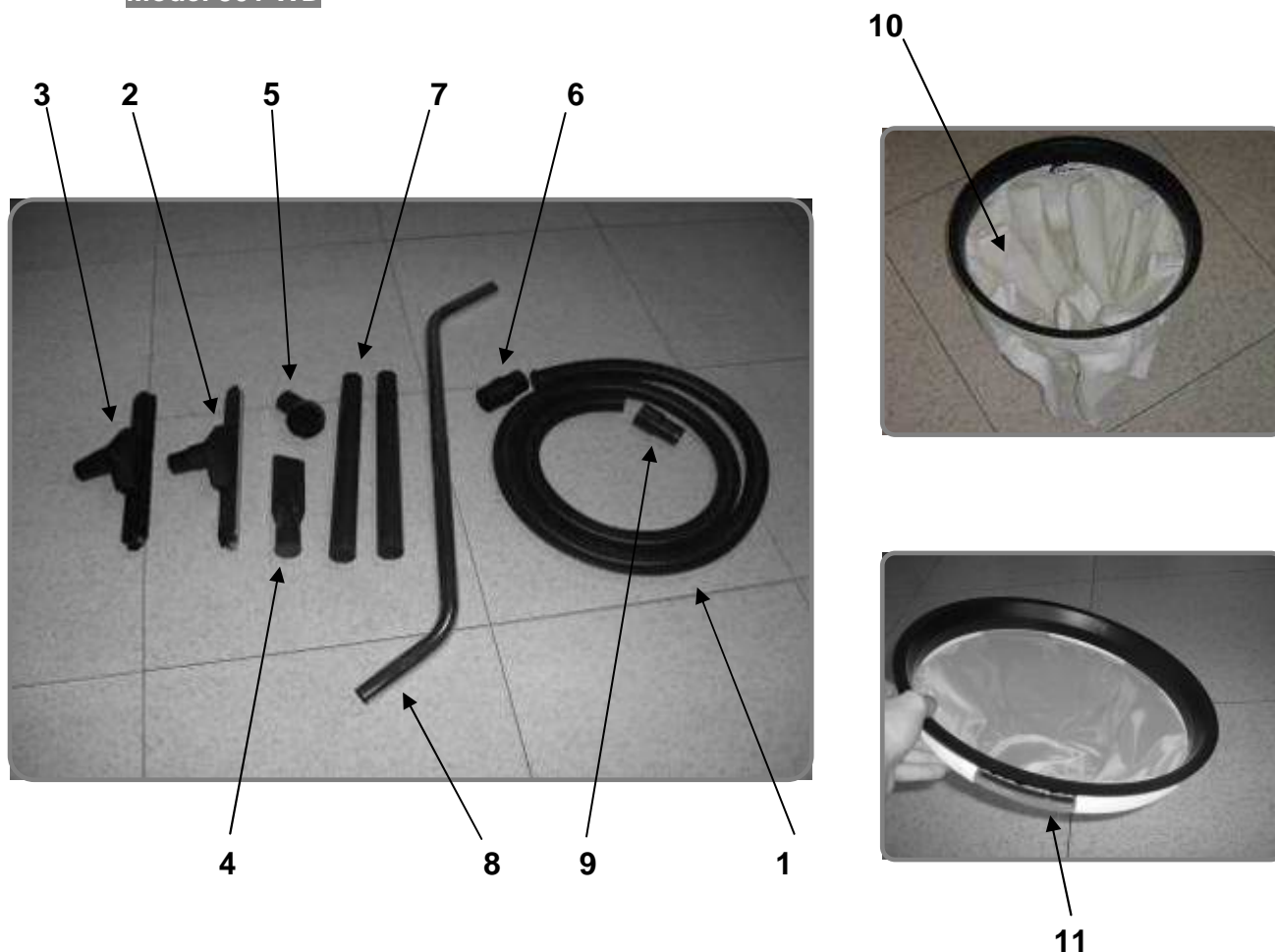
Model 802 WD



- 1) Push handles
- 2) Cover release fasteners
- 3) ON / OFF switches
- 4) Power cable with plug
- 5) Suction pipe coupling point
- 6) Container for vacuumed material
- 7) Wheels
- 8) Fixed castors
- 9) Motor protection cover
- 10) Liquid drainage pipe
- 11) Lateral handles

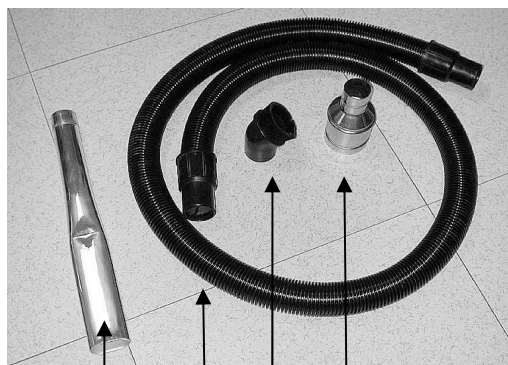
1.2 Accessories provided

Model 501 WD

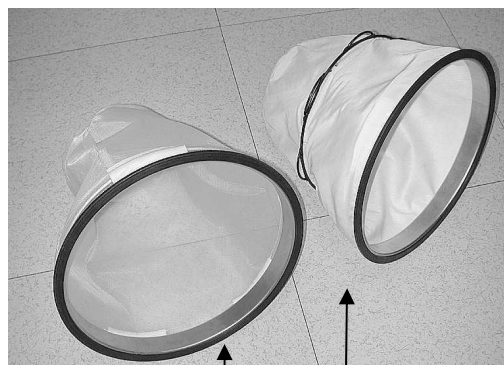


- 1) MT. 2,5 SV2511210 – BLACK HOSE D. 38
- 2) AA2643 – FLOOR BRUSH FOR LIQUIDS MM. 400 D. 40
- 3) AA2644 – FLOOR BRUSH FOR DUST MM. 400 D. 40
- 4) AA2648 – PVC LANCE D. 40
- 5) AA2647 – PVC BRUSH D. 40
- 6) AA1027 – PVC RUBBER CONNECTION FOR ACCESSORIES D. 40
- 7) (N. 2) AA2646 – PVC EXTENSION MT. 0,5
- 8) AA2642 – DOUBLE BEND D. 40
- 9) AA2651 – RUBBER CONNECTION FOR HOSE 38/60 02774
- 10) AR4678 – COMPLETE KIT WITH POLYESTER FILTER AR4676 (MTL 501 WD)
- 11) AR4679 – COMPLETE KIT WITH PPL FILTER AR4677 (MTL 501 WD)

Model 802 WD



1 2 3 4



5 6

- 1) AA1045 - ALUMINIUM LANCE D50x500
- 2) AA2591 – BLACK HOSE D50 MT.2,5 WITH RUBBER CONNECTIONS
- 3) AA2592 – PVC BRUSH D50
- 4) AA2638 – IRON REDUCTION D80/50
- 5) AR3479 – COMPLETE KIT WITH FILTER FOR LIQUIDS (MTL 602-802)
- 6) AR3480 – COMPLETE FILTER FOR DUST (MTL 602-802)

1.2.1 Optional accessories

MODEL 802 WD

Absolute HEPA filter code AA 2627 Ø 390 - H=110

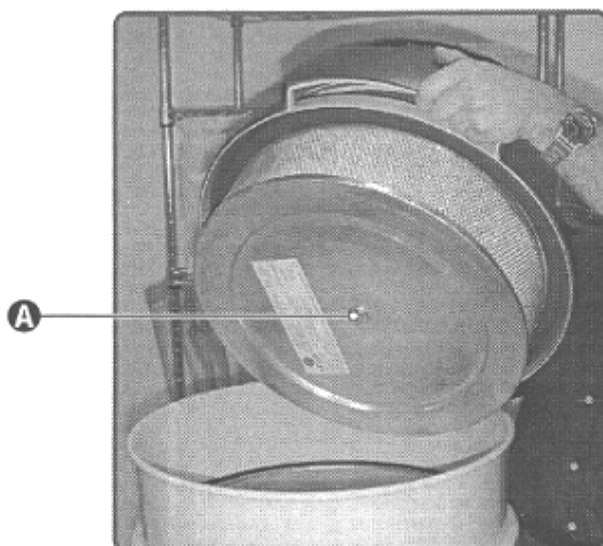
The absolute filter permits trapping the finest dust particles which have not been trapped by the primary polyester filter. If the vacuum cleaner features this specific filter, its filtering capacity will have to be periodically checked.



Important!

During these operations, wear individual protection devices such as gloves, protective eyewear and dust mask.

To change the filter, switch off the vacuum cleaner and remove the plug from the power socket, release and remove the upper cap and then loosen nut (A). Remove the absolute filter, place it in a plastic bag, close this and dispose of it according to applicable laws for the type of vacuumed dust.



1.3 Identification details of manufacturer

Delfin srl

Strada della Merla, 49/a
10036 Settimo Torinese (TO) - Italy
Tel. 0039.011.8005500
Fax. 0039.011.8005506
www.delfinvacuums.it
delfin@delfinvacuums.it

1.4 Marking plate

In compliance with the Machine Directive on vacuum cleaners, the machine is fitted with CE plates.

When contacting the manufacturer or dealer, always quote the details shown on the vacuum cleaner plate.

Model 501 WD



Model 802 WD



1.5 Intended uses

These specific models of vacuum cleaners have been designed, built and protected for the vacuum cleaning - using special filters - of dry, non-flammable and non-harmful dusts and for vacuuming non-flammable and non-corrosive liquids.

Any other use is considered **IMPROPER**.

The vacuum cleaner is in any case intended for professional industrial use.

1.6 Allowed environmental conditions

To ensure the correct operation of the vacuum cleaner, this must be positioned protected against atmospheric agents (rain, hail, snow, fog, dusts in suspension, etc.) with an environmental running temperature between 5°C and 45°C and relative humidity not above 70%.

The work environment must be clean, well-enough lit and devoid of explosive atmosphere.

1.7 Noise level

Noise level readings were taken in accordance with the provisions of UNI 7712 standards. Sound tests performed on this specific vacuum cleaner model show an acoustic pressure of

74 dB (A) for the model 501 WD

75 dB (A) for the model 802 WD



Important!_____

Pursuant to articles L.D. 277/91, workers exposed to sound pressure levels above 85 dBA must be protected by special individual protection devices.



It is therefore necessary, if such working conditions exist, to provide workers with such approved individual protection devices and to inform them of the risks relating to noise exposure._____

1.8 Storage

Remove the filter and clean it, empty the container and store the vacuum cleaner in a place protected against atmospheric agents with a temperature between 0°C and 40°C. Cover with a nylon sheet to prevent accumulation of dust.

1.9 Scrapping

In case of scrapping, all the component parts of the vacuum cleaner will have to be disposed of through adequate disposal channels in accordance with applicable legislation. Before scrapping, all plastic and rubber parts will have to be separated from the electrical material.

Parts made of plastic, aluminium and steel only may be recycled if collected by special centres.

1.10 Technical details

		501 WD	802 WD
Use		Dust / Liquids	Dust / Liquids
Voltage	Volt - HZ	230 - 50/60	230 - 50/60
By-pass motors	N°	1	2
Powers	KW - Hp	1,15 / 1,5	2,3 / 3
Max. vacuum	mm H ₂ O	2500	2500
Max. air flow	M ³ /h	180	360
Filter surface	cm ²	4.400	7.000
Capacity	Lt.	50	80
Vacuum diameter	Ø mm	50	80
Noise level	dB(A)	74	75
Isolation	Class	II	II
Hight	cm	90	108
Weight	Kg	20	30
Dimensions	cm	52 X 40	50 X 48
Filtre for liquids and floating device		Yes	yes

1.11 Warranty

Delfin guarantees this vacuum cleaner model for a period of 24 months from the date of purchase indicated on the tax document at the time of delivery of the vacuum cleaner by the seller.

The warranty shall be invalidated in the event of the vacuum cleaner having been repaired by unauthorised third parties or of equipment or accessories being used that have not been supplied by Delfin or which have not been recommended or approved by Delfin or whose serial number has been removed or altered during the warranty period.

Delfin undertakes to repair or replace, free of charge, those parts which, during the warranty period show manufacturing faults. Repairs shall be made in the Delfin facilities only or in a Technical Assistance Centre indicated by us and machines shall be sent to us carriage free (transport costs to be paid by the user, unless otherwise agreed).

The warranty does not cover any cleaning of working parts.

Faults not directly attributable to materials or manufacture shall be examined only in our facility or in a Technical Assistance Centre indicated by us. If claims appear unjustified, all the costs relating to repair and/or replacement of parts shall be charged to the buyer.

The purchase tax document shall be shown to the technical personnel making the repairs and must accompany the vacuum cleaner dispatched for repair.

The warranty does not cover: accidental damage, caused by transport or carelessness or inadequate treatment, or improper use not in compliance with the instructions in the instruction manual, or in any case by occurrences not dependent on normal operation or use of the vacuum cleaner. Delfin declines all responsibility for any damage to persons or things caused by bad or improper use of the vacuum cleaner.

All disputes shall be referred to the Law Court of Turin (Italy).

The manufacturer declines all liability in the following cases:

- Failure to send the warranty Certificate
- Failure to follow the instructions
- Use of non-original spare parts
- Failure to service the machine properly



SAFETY SECTION

2.1 Safety details

The person in charge of safety shall be responsible for informing workers about the risks associated with vacuum cleaner operation.

The obligation also exists of training workers so they are able to protect themselves and others.

Failure to observe basic safety regulations and precautions could cause accidents during vacuum cleaner operation, maintenance and repair. Accidents can often be avoided by recognising potentially dangerous situations before these occur. Operators should be aware of potential hazards and be trained and skilled enough. They should also have the tools necessary to perform these duties properly.

Delfin shall under no circumstances be deemed liable for accidents or damage caused by use of the vacuum cleaner by personnel not properly trained or who use it in an improper manner, as well as by even partial failure to comply with the safety regulations and intervention procedures indicated in this manual.

The safety precautions and warning notices are indicated in this manual and on the product.

Unless these hazard messages are heeded, the operator could become involved in accidents with serious consequences for him/herself and for other people.

The safety messages are highlighted by the following symbols:



Important! _____

Unless these messages are heeded, operator injuries could occur. _____



Warning! _____

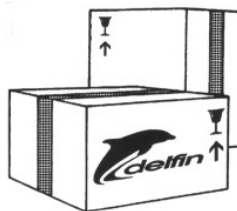
Unless these messages are heeded, vacuum cleaner damage could occur. _____

Delfin cannot foresee all possible circumstances capable of representing a potential hazard. The warnings in this manual and on the products should not therefore be deemed exhaustive.

In the event of tools, procedures, work or machining methods being used that are not explicitly recommended by Delfin, make sure no hazards exist for operators and others.

Only ever use original DELFIN spare parts

Delfin declines all liability in the event of non-original spare parts being used.



2.2 Safety precautions



Important!

The following indications are, by themselves, not enough to fully protect against all the hazards that could arise during vacuum cleaner operation. These will have to be integrated with common sense and the experience of the operator, both of which are crucial factors for preventing accidents.

Each section of this manual lists further specific safety precautions for the various operations.

Maintenance jobs must always be performed with the power plug detached from the power point.

The employer must inform and train the user according to the provisions of applicable laws.

Before using the machine, prepare and train yourself by reading this manual carefully. Use of the machine by untrained and unauthorised persons is forbidden.

Using the machine to vacuum toxic substances is forbidden unless this has been equipped with special filters required for the specific type of dusts. Such filters must be explicitly requested by you.

Do not vacuum flammable materials or substances or which could cause explosions (fuels, solvents, etc.). To vacuum such materials, the machine must be built with Anti-explosion Motor and Electric System and this must be requested by you explicitly.

Do not vacuum corrosive substances unless the machine is equipped with containers suitable for this purpose (Stainless-steel AISI 304).

Use of the machine without the supplied filters is not recommended.

If the filters are correctly fitted, the machine will not eject any objects.

If the machine is used to vacuum toxic-harmful substances, the container must be emptied and the filters cleaned using adequate individual protection devices, selected according to the type of substances to be vacuumed.

Never rest miscellaneous materials on the horizontal protection guard.

The machine casing containing moving parts must not be removed by the user.

When using the machine, mind other people, especially children.

Use the machine cautiously on slopes and ramps. Do not change direction on gradients.

Make sure the parked machine remains stable by operating the braked wheel.

During cleaning operations, maintenance jobs or when changing parts, the starter switch must be off and the machine must be disconnected from the power mains by removing the cable from the socket.

Only skilled persons should carry out repairs.

During use, mind the power supply cables and avoid crushing or pulling these.

Periodically check the mains power cable to ensure this is not damaged.

In the event of the cable being damaged, the machine must not be used.

In the event of the cable, plugs or couplings being replaced, make sure these are protected against water spray and check mechanical strength.

Never pull the machine by means of the power cable and the vacuum pipe.

Motor brushes and burnt-out fuses must be replaced by DELFIN or authorised dealers. Always use original spare parts.

The user is responsible for disposing of vacuumed substances in accordance with applicable laws.

After 10 years of use, we recommend sending the machine for a complete overhaul to DELFIN srl.

The machine is supplied with: instruction manual, Exploded Spare Parts drawing, Test Sheet, Warranty Slip, Approval Certificate.

In the event of Customers fitting a tool to the machine not supplied by DELFIN, make sure the safety conditions required by Machine Directive 98/37 EEC are complied with and in any event, DELFIN is unable to accept liability for any problems arising from use of such tool.

The vacuum cleaner must not be operated in a corrosive or explosive environment.

Always make sure the vacuum cleaner is free of all foreign materials such as debris, oil, equipment and other objects that could affect operation and cause injury to persons.

Avoid using flammable or toxic solvents such as petrol, benzene, ether and alcohol for cleaning.

Avoid prolonged contact with solvents and inhaling their vapours. Avoid use close to open flames or sources of heat.

Never use the vacuum cleaner without the filter.

Do not vacuum lit cigarette ends. The filter could be damaged.

Do not vacuum petrol or flammable liquids in general.

Make sure all the guards and protection devices are in place and that all the safety devices are in place and working properly.

Do not wear loose or hanging clothing such as ties, scarves or torn garments that could become trapped and be sucked up by the cleaner.

Do not open the vacuum container with the machine running.

The manual should always be kept handy for reference so the operating cycle can be checked every time there are doubts.

In the event of this manual being lost or damaged, ask DELFIN for a new copy.

Structural damage and improper alterations or repairs could change the protection capacity of the vacuum cleaner and therefore cancel this certification.

Any alterations to the appliance must only be made by Delfin engineers.

During maintenance jobs, affix a notice to the appliance indicating "MACHINE BEING SERVICED, DO NOT START".

Climbing on the cleaner is forbidden.

Never touch electric wires, switches, buttons, etc. with wet hands.

Before connecting to the power mains, make sure the power voltage and frequency are those shown on the machine plate.

Make power connections to a mains supply with efficient earth system.

In the event of an extension being used, make sure this is in perfect condition, marked CE and that the cross section of the cable is suitable for the vacuum cleaner power input.

When restoring original working conditions, the appointed personnel should make sure that at the end of the operating procedure, proper vacuum cleaner operation safety conditions are restored, especially the safety devices and the protective guards.

Only adult persons should use the vacuum cleaner.

During vacuuming operations, always brake the vacuum cleaner using the special revolving wheel lock.

2.3 Safety plates and symbols

Plates are affixed to the vacuum cleaner showing safety symbols and/or messages.



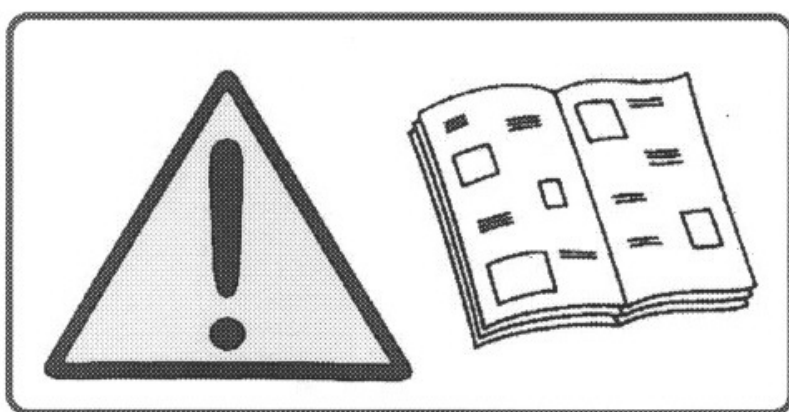
Important!

Make sure all the safety messages are legible.

Clean these with a cloth, soap and water. Do not use solvents, diesel fuel or petrol.

Replace the damaged plates with new ones supplied by Delfin.

If a plate is affixed to a replaced part, make sure a new plate is affixed to the new part.



Important!

Read the operator's and maintenance manual carefully before using the cleaner or doing any maintenance jobs.

2.4 Outstanding risks

Careful analysis of risks performed by the manufacturer and stored in the technical file has made it possible to eliminate most of the risks associated with vacuum cleaner operation. The manufacturer advises carefully following the instructions, procedures and advice contained in this manual as well as applicable safety regulations, including the use of the envisaged protection devices, both those integrated in the cleaner and individual.

Outstanding risks associated with the vacuum cleaner could be:

Electrical maintenance risks caused by the need to work under power.

Pursuant to Presidential Decree 547/55, only trained personnel should work on the machine with the power supply connected and this must have double earth insulation.

Risk of improper use in the presence of explosive and flammable substances.

The vacuum cleaner must not be used in environments containing substances in the form of liquids that could vaporise at room temperature and flammable dusts and gas.

Risks of operation in humid environments

Keep to the limits shown in this manual at chap. 1.5 Allowed environmental conditions.

Risk of erroneous interpretation of the safety pictograms

Having identified the various outstanding risks, the manufacturer has affixed to the cleaner a number of hazard labels in compliance with regulations relating to the graphic symbols to be used.

The user must immediately replace any safety plates that become illegible due to wear or damage.



Important!

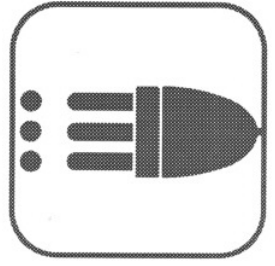
Removing the safety plates on the vacuum cleaner is strictly forbidden.

The manufacturer declines all liability in relation to vacuum cleaner safety in the event of failure to comply with the above indications.

2.5 Applied directives

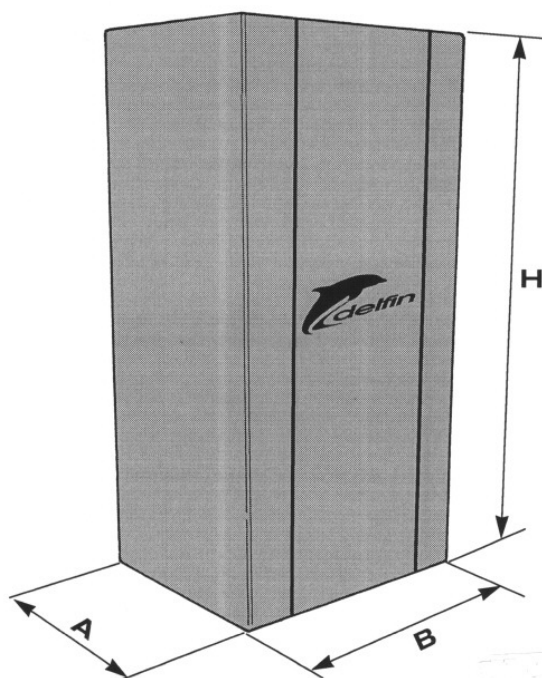
The following directives apply to the vacuum cleaner described in this manual:

- **2006/42 EEC Machine directive**
- **2004/108 EEC Electromagnetic compatibility directive**
- **2006/95 EEC Low-voltage directive**



INSTALLATION SECTION

3.1 Handling



	A (cm)	B (cm)	H (cm)	Weight (with packaging)
601 WD	45	55	100	40 Kg
802 WD	56	66	110	55 Kg

The machine is supplied in a strong cardboard box secured with straps.

Transport the package using a fork-lift truck of adequate lifting capacity and make sure it is stable and that weight is properly distributed on the forks.



Before starting to move, make sure the transit area is free and that there are no moving objects on the packaging.

During movement, keep the load low for greater stability and safety.

When starting up the vacuum cleaner, move this by means of the wheels supplied.

The appliance must never be moved using fork-lift trucks or other equipment that lifts it off the floor.

If for any reason the need arises to lift and transport the vacuum cleaner, this operation must be performed under the responsibility of the user. The user is therefore invited to secure the load as he best thinks fit to ensure the operation is performed in total safety.

3.2 Installation



Caution!

Before installing the vacuum cleaner, carefully make a sight check to pinpoint any damage suffered during transport.

In the event of any component parts being damaged, do not proceed with installation. Notify the manufacturer and reach an agreement on how to proceed.

The vacuum cleaner already features a suction filter.
Fit the accessory required for the type of vacuuming operation on the opposite end of the hose.



Note: the hose with relevant couplings and vacuum accessories are supplied as STANDARD.

Contact your dealer for information relating to the different types of OPTIONAL accessories available for this specific vacuum cleaner model.

Fit the supplied connector on the pipe union.



Fit the supplied pipe in the connector.



Make sure the power supply corresponds to the voltage and frequency indicated on the vacuum cleaner plate.



Important!

Do not fit the plug in the power socket with wet hands.

In the event of an extension being used, make sure this is in perfect condition, in compliance with EC standards and with cable cross section suitable for the power input of the vacuum cleaner.



OPERATION SECTION



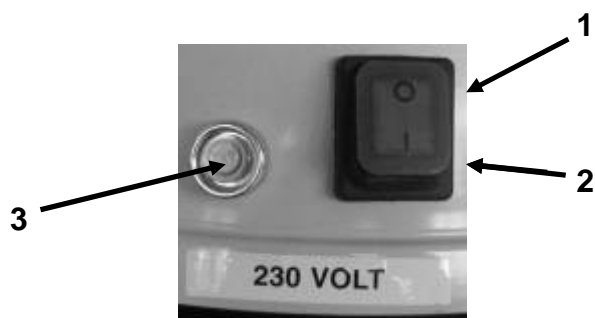
Important! _____

The vacuum cleaner must not be used by unauthorised personnel and by anyone who has not read the operator's and maintenance manual.

The operators and maintenance technicians who perform authorised jobs on the cleaner must be adequately informed about the use of individual protection devices such as shoes, gloves and mask, which make it possible to eliminate all risks associated with the performance of the various jobs.

4.1 Description of controls

Model 501 WD

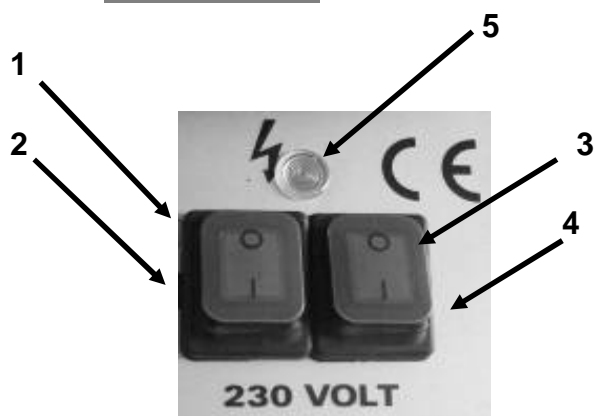


1) STOP BUTTON

2) START BUTTON

3) GREEN POWER ON LIGHT

Model 802 WD



1) STOP BUTTON MOTOR 1

2) START BUTTON MOTOR 1

3) STOP BUTTON MOTOR 2

4) START BUTTON MOTOR 2

5) GREEN POWER ON LIGHT

4.2 Work cycle



Important!

Before fitting the plug, make sure the power voltage corresponds to that on the CE marking plate.

- Make sure the power plug is correctly fitted in the power socket.
- Make sure the flexible hose is properly fitted and locked in the vacuum pipe union.
- Make sure the power cable and any extension used are integral and in perfect condition.
- Block the vacuum cleaner by means of the retainer provided.



- Grip one end of the flexible hose complete with selected accessory.
- Press the **START** button and start vacuuming.
- To stop the vacuum cleaner, press the **STOP** button.



Caution!

Before switching the vacuum cleaner back on, make sure the motors have come to a complete halt.

- After finishing work, disconnect the vacuum cleaner from the power socket.

To move the vacuum cleaners 501 WD and 802 WD, use the side handles.



The vacuum can be moved only on flat ground !
If the vacuum is moved on inclined grounds, you can risk to lose the control,
because of the weight and to damage persons or things.



Caution!

During vacuuming, avoid rolling up or bending the flexible hose.

4.3 Emptying the container

Modello 501 WD



Modello 802 WD



Stop the motors by pressing the STOP buttons.



Important!

Disconnect the plug from the power socket

Modello 501 WD



Modello 802 WD



Release the vacuum pipe.

Modello 501 WD



Modello 802 WD



Release the fasteners that hold the motor head.

Modello 501 WD



Modello 802 WD



Lift the motor head and rest it on a flat surface being careful not to damage the power cable.



Remove the floating device.



Remove the filter.

Modello 501 WD**Modello 802 WD**

Empty the bin from the dust and liquids into special containers.

Important! _____



Always ensure disposal is made through channels authorised in the country where the cleaner is working.



Both vacuums the 501 WD and 802 WD are equipped with a liquid drain-pipe:

- Release the pipe from the clamp (**A**)
- Remove the cap (**B**)

Drain the liquid inside the vacuum cleaner off into special containers for disposal.



MAINTENANCE SECTION



Caution!

**Special maintenance jobs on the vacuum cleaner must only
be done by the manufacturer's skilled technicians.**

5.1 Informative notes

This section describes the control and special maintenance operations crucial for keeping the vacuum cleaner in perfect working condition.

Any other jobs which might be necessary to eliminate operating faults must be expressly authorised by the manufacturer.

In such cases, always notify the identification details of the cleaner.

In the case of major repairs, it is best to contact an authorised dealer, whose skilled personnel, backed by all the technological experience relating to the original factory construction methods, are always available and ready to promptly intervene.

5.2 General safety precautions

Maintenance jobs must always be performed by skilled technicians, trained to carry out their specific jobs. In the case of this machine, these are:

- *Mechanical maintenance*
- *Electrical maintenance*

The Safety Manager has the precise duty of determining the professional capacities and skills of such persons.

Before doing any maintenance job, the safety manager must:

- Make sure there are no unauthorised persons in the work area.
- Make sure the necessary tools are on hand and that these are in good condition.
- Make sure that lighting is adequate and, if necessary, provide 24-V portable lamps.
- Make sure the maintenance engineer is equipped with all approved individual protection devices needed for the specific operation (gloves, eyewear, shoes, etc.).
- Make sure the maintenance engineer has carefully read the instructions contained in this manual and knows how the vacuum cleaner works.

Before carrying out a maintenance job, the maintenance engineer must:

- Disconnect the plug from the power socket.

Work done on motors or other electrical component parts must only be performed by a specifically trained electrician, authorised by the Safety Manager.

Always use tools that are in perfect condition and specifically made for the operation to be done. The use of unsuitable tools or tools not in good condition could cause serious damage.

5.3 Maintenance operations



Important!

All the described operations must be done with the plug disconnected from the power socket.

Before starting any maintenance or cleaning job, always wear adequate protective clothing, eyewear and/or gloves according to the type of job to be done.

For smooth vacuum cleaner operation, a number of controls are best made periodically:

- Check to see whether the filter is worn or has become too permeable.
- Make sure the sealing gaskets of the motor head base, of the filter-holder ring and of the container are working efficiently.
- The electrical parts (plugs, switches, cables, etc.) must not be faulty.
- The screws and nuts must always be tight.
- Make sure the container is not overfull. This should be emptied when the vacuumed material has reached 3/4 of maximum capacity.
- Check the integrity of the flexible vacuum hose and accessories to be used.
- If the flexible hose is perforated, the power of the cleaner will be reduced and dust and liquids will leak into the environment.



Caution!

All maintenance and repair jobs must be performed directly by DELFIN or its authorised dealers.

5.4 Replacing the filters

To replace the filters, proceed as follows:

- Turn off the vacuum cleaner by pressing the motor **STOP** buttons.
- Disconnect the vacuum cleaner plug from the power socket.



Important!
Wear individual protection devices.



Block the vacuum cleaner by means of the brake.



Release the fasteners that hold the motor head.

Model 501 WD

Model 802 WD



Lift the motor head and rest it on a flat surface.

Modello 501 WD

Modello 802 WD



Remove the fibre filter and if necessary replace it with a new one (cod. **AR3475**)



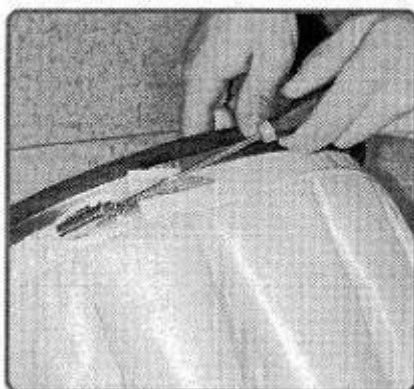
Remove the floating device.



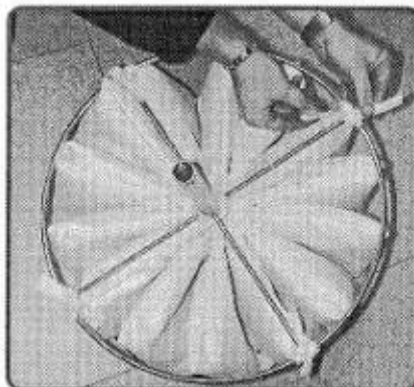
Remove the filter.



Remove the nylon filter (cod. **AR3472**)



Loosen the clamp and remove the polyester dust filter (code **AR 3473**). The same procedure should be used to remove the polypropylene filter for vacuuming liquids (code **AR 3474**).



Fit the new filter and tighten with the clamp. Fit the entire assembly in the container. Fit the float and motor head and secure with the two safety retainers.



Important!

All the material trapped by the filter and the filter itself must be disposed of through authorised channels in the country where the vacuum cleaner is used.

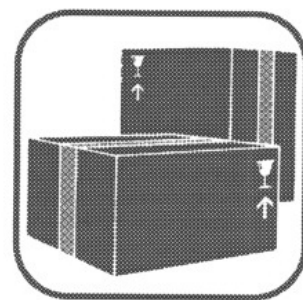
5.5 Troubleshooting

Fault found	Possible fault	Recommended remedy
The cleaner fails to start.	No power.	Check the power mains supply. Check the integrity of the plug and power cable.
	Indicator off and plug fitted: fuses burnt out.	Replace the fuses.
	Indicator on, plug fitted, switches working: worn motor brushes.	Replace the brushes.
Leakage of liquids or dusts.	Perforated vacuum pipe.	Replace the pipe.
	Perforated filter.	Replace the filter.
	Filter unsuitable for type of job.	Fit a suitable filter for the type of material to be vacuumed.
The vacuum cleaner does not work as it should.	Pipe perforated or blocked.	Check the pipe and, if necessary, replace.
	Container full	Empty container.
	Filter blocked.	Replace filter.
	Seals worn.	Check seals and if necessary replace.
	Air leak.	Check for any air leaks out of closing fasteners, tightening screws, container or filter chamber.
Motor very noisy.	Carbons worn or broken.	Contact DELFIN after-sales.



Caution!

For any other problems, contact the DELFIN after-sales service.



SPARE PARTS SECTION

Spare parts orders can be sent by fax, by photocopying the attached form, via e-mail or ordinary mail.



Fax

0039.011.8005506



E-Mail

delfin@delfinvacuums.it



Mail

**Strada della Merla, 49/a
10036 Settimo Torinese (TO) Italy**

Recommended spare parts: MISTRAL 501 W-D

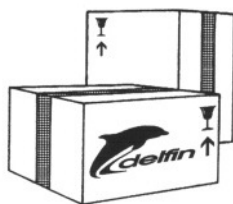
Description	Code	N°
By-pass motor 240V 50/60Hz 1150W (LAMB ELECTRIC)	AA 2783	2
Filter gasket 10X3	AR2069 m 1,2	1
FUSIBILE 10A 5x20 CF I.I.	AR 2496	8
MTL 202 DS gasket	AR 4675 m 1,2	22
Polyester filter D360 H250 8T MTL 501 WD	AR 4676	3
PPL filter 100 micron D360 140H MTL 501 WD	AR 4677	3
Metallic filter-holder D360 MTL501 W-D (8MM/1130)	AR 4704	4

Recommended spare parts: MISTRAL 802 W-D

Descrizione	Codice	Rif. N°
By-pass motor 240V 50/60Hz 1150W (LAMB ELECTRIC)	AA 2783	16
Floating device gasket D.120 Sp.3	AR 2553	27
Metallic filter-holder D.420 MTL (8MM/1310)	AR 3471	23
Nylon filter D420+rubber band	AR 3472	20
Polyester filter G D420 MTL WD	AR 3473	22
PPL filter D420 MTL WD	AR 3474	32
Fibre filter MTL WD	AR 3475	31
Basket MTL 3X30 L.1450	AR 3477	24
Filter gasket D420 MTL	AR 3485	25



Delfin srl
Strada della Merla, 49/a
10036 Settimo Torinese (TO) – Italy
Tel. 0039.011.8005500
Fax 0039.011.8005506



FAX

DATE

Page of

IMPORTANT: Type or complete in block capitals

Spare parts order form

SENT BY

TEL

DESTINATION OF SPARES	ADDRESS	
	LOCALITY	PROV.
	NATIONALITY	TEL.

MODEL	PART NO.	TAB.	PART CODE
DESCRIPTION			Qty

MODEL	PART NO.	TAB.	PART CODE
DESCRIPTION			Qty

MODEL	PART NO.	TAB.	PART CODE
DESCRIPTION			Qty

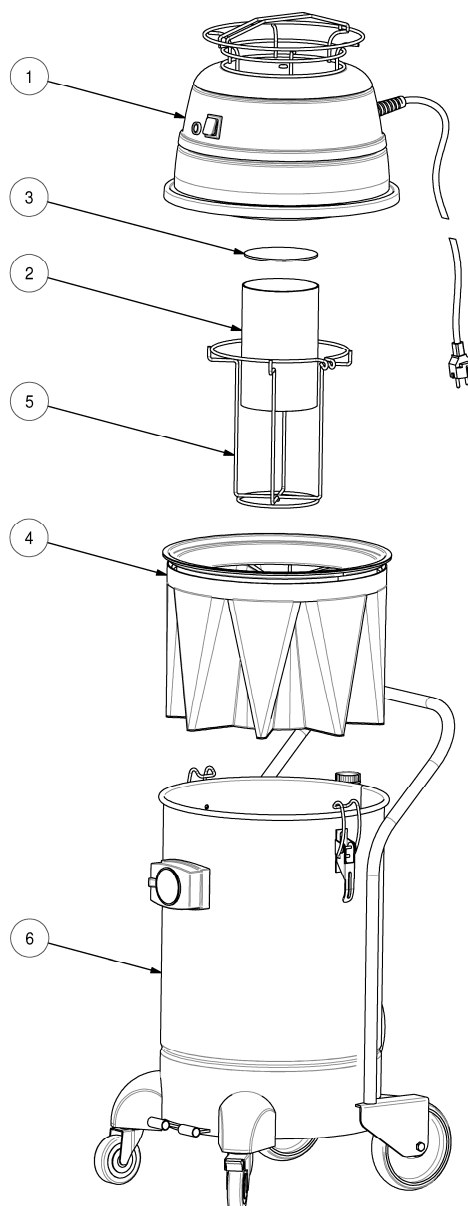
MODEL	PART NO.	TAB.	PART CODE
DESCRIPTION			Qty

MODEL	PART NO.	TAB.	PART CODE
DESCRIPTION			Qty

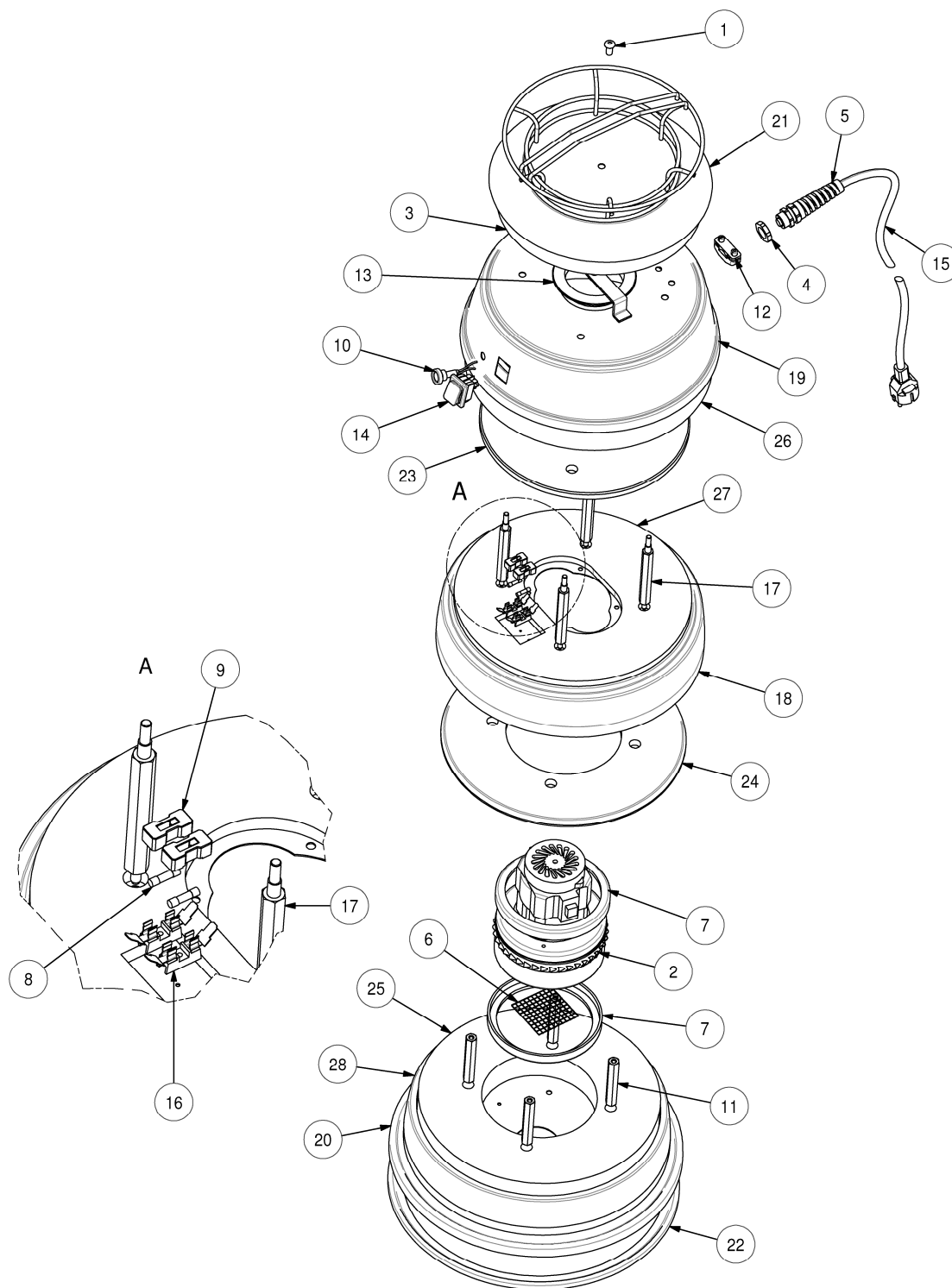
MODEL	PART NO.	TAB.	PART CODE
DESCRIPTION			Qty

MODEL	PART NO.	TAB.	PART CODE
DESCRIPTION			Qty

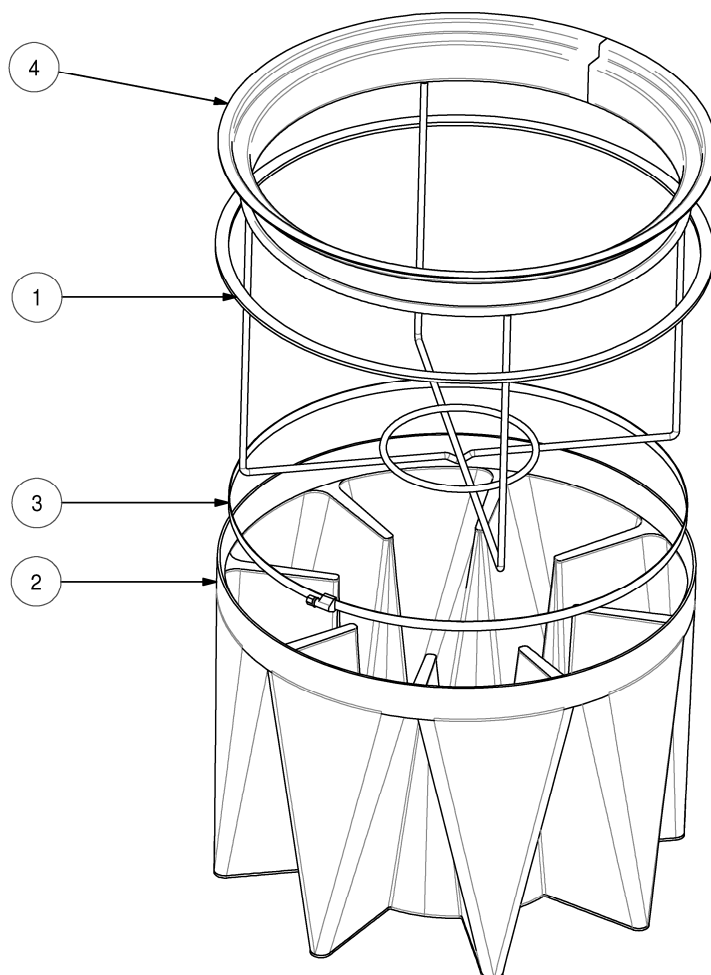
MODEL	PART NO.	TAB.	PART CODE
DESCRIPTION			Qty



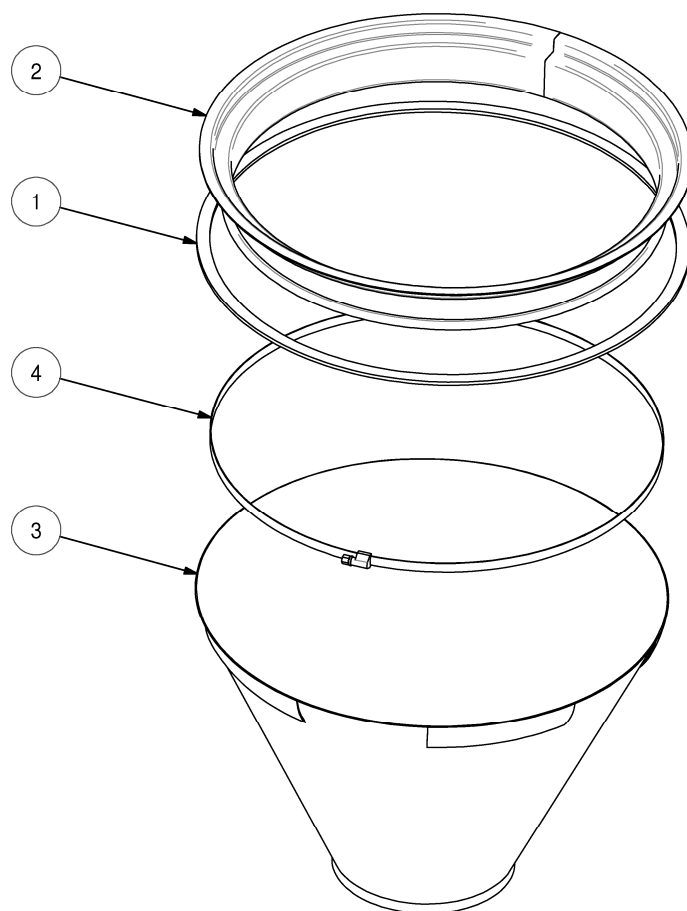
POS.	QTY	CODE	DESCRIPTION
1	1	AA2803	TESTATA MTL 501 WD 1 MOTORE
2	1	AR2015	GALLEGGIANTE
3	1	AR2553	GUARN.GALLEGGIANTE (MOUSSE ADESIVA D.120 Sp.3)
4	1	AR4678	KIT CPL FILTRO AR4676 (MTL 501 WD)
5	1	AR4929	GUIDA GALLEGGIANTE MTL501WD
6	1	AR9110	KIT CONTENITORE MTL 501 WD



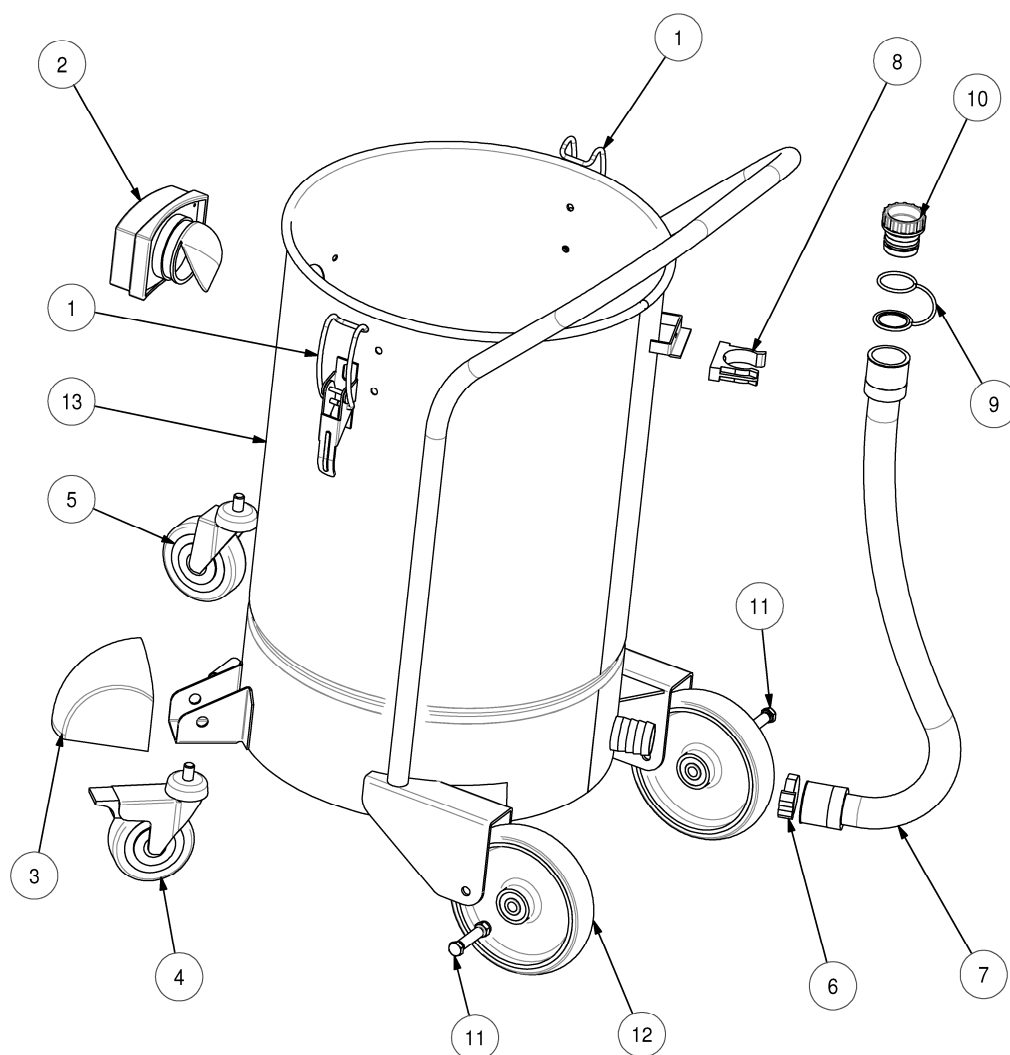
POS.	QTY	CODE	DESCRIPTION
1	1	Z40016	VITE TBEI ZINC 10.9 ISO 7380 8X16
2	1	AA2783	MOTORE BP 240V 50/60Hz 1150W (LAMB ELECTRIC)
3	1	AR2021	INSONORIZZ. COPERCHIETTO
4	1	AR2027	DADO POLIAMIDE PG 13,5 NERO (PER SPIR.)
5	1	AR2028	PRESSACAVO POLIAMIDE SPIR.PG 13.5 NERO
6	1	AR2098	RETE FLANGIA ES
7	2	AR2252	GUARNIZIONE "L" D145X5 H15
8	2	AR2496	FUSIBILE 10A 5x20 CF I.I.
9	2	AR2501	CAPPUCCIO NERO COPRIFUSIBILE
10	1	AR3517	SPIA VERDE ALIMENT. MTL + TESTATE ABS
11	4	AR3536	DIST. TESTATA MONOFASE (FERMAMOTORI, ESTERNO)
12	1	AR3544	SUPPORTO FERMACAVO SBMMM932
13	1	AR4085	ANELLO RAFFREDDAMENTO GOMMA STAMP.SERIE ABS
14	1	AR4088	INTERRUTTORE BIPOL.LUMINOSO ROSSO
15	1	AR4637	CAVO ALIMENT.3X1,5 16A SCHUKO (10 Mt.)
16	2	AR4639	PORTAFUSIBILE 16A 250V
17	4	AR4644	DISTANZIALE TESTATA MTL 202 DS (COPERCHIO)
18	1	AR4664	FERMAMOTORI 1 FORO MTL 201 DS
19	1	AR4665	COPERCHIO 1 FORO MTL 201 DS
20	1	AR5138	BASAMENTO MTL 501 WD 1 FORO
21	1	AR4667	COPERCHIETTO CON AVVOLGICAVO MTL 202 DS
22	1,2 m	AR4675	GUARN. BASAMENTO MTL 202 DS
23	1	AR4688	INSONORIZZ. COPERCHIO MTL 501 W-D
24	1	AR4689	INSONORIZZ. INF. FERMAMOTORE MTL501WD
25	1	AR4690	INSONORIZZ. BASAMENTO MTL 501 W-D
26	1	AR4697	INSONORIZZ. LATERALE COPERCHIO MTL 501 W-D
27	1	AR4698	INSONORIZZ. SUP. FERMAMOTORE MTL 501 W-D
28	1	AR4701	INSONORIZZ. LATER. FERMAMOT. MTL 202 DS 501 W-D



POS.	QTY	CODE	DESCRIPTION
1	1,2 m	AR4271	GUARN.GOMMA SPUGNA GRIGIA ADES. 3x10
2	1	AR4676	FILTRO POL.G D360 H250 8T MTL 501 WD
3	1	AR4704	FASCETTA FERMAFILTRO D.360 MTL501 W-D
4	1	AR4931	ANELLO REGGIFILTRO D360 CPL MTL501WD

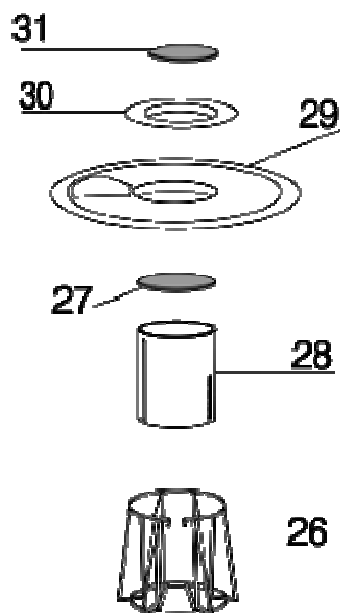
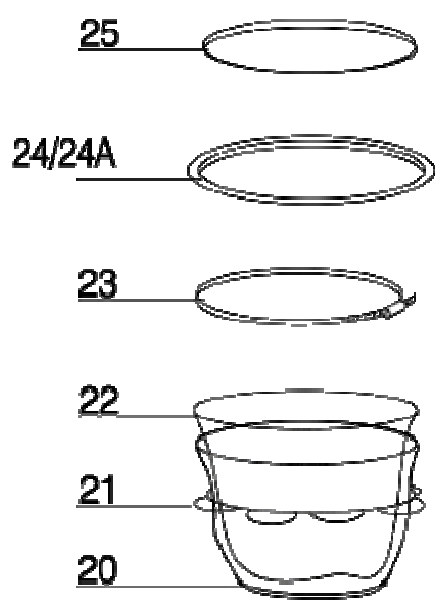
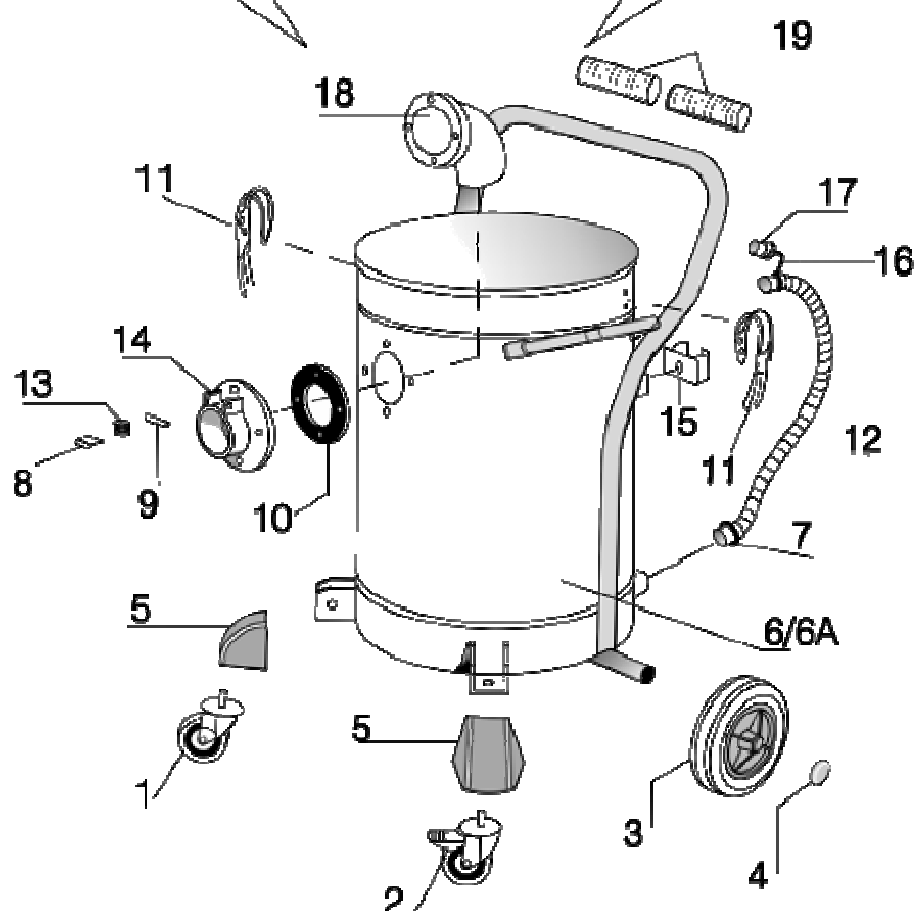
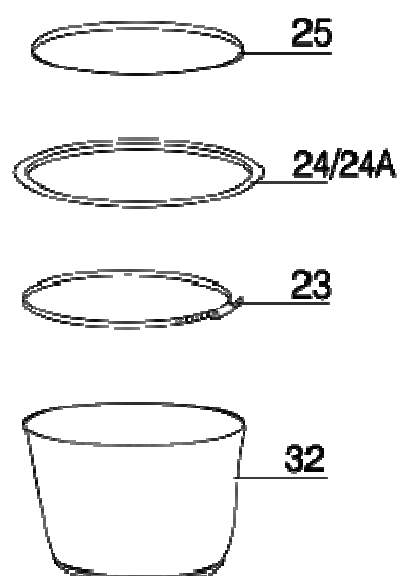


POS.	QTY	CODE	DESCRIPTION
1	1,2 m	AR4271	GUARN.GOMMA SPUGNA GRIGIA ADES. 3x10
2	1	AR3769	ANELLO REGGIFILTRO D360
3	1	AR4677	FILTRO PPL.100 micron D360 240H MTL 501 WD
4	1	AR4704	FASCETTA FERMAFILTRO D.360 MTL501 W-D



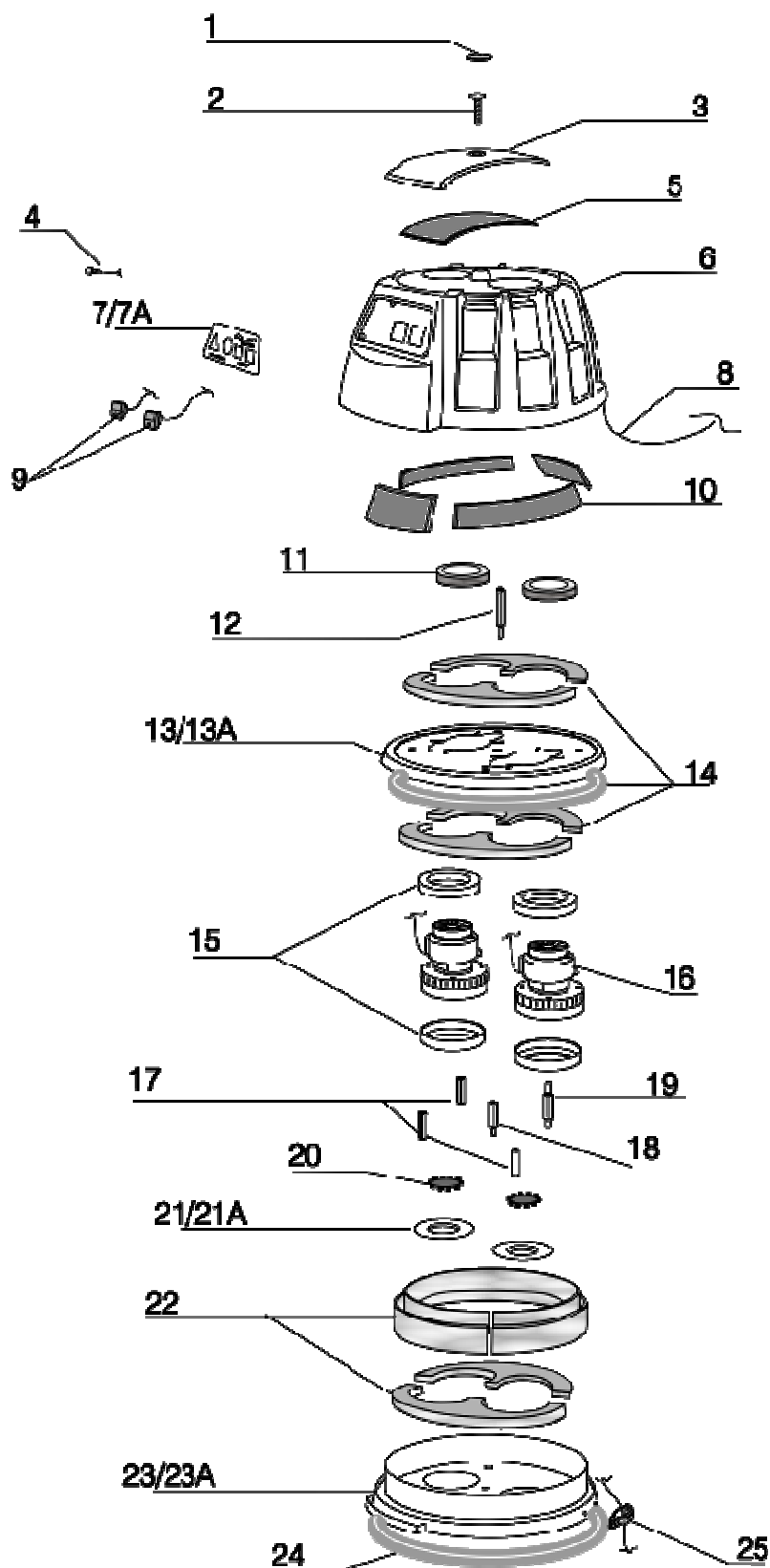
POS.	QTÀ	CODE	DESCRIPTION
1	2	AR2002	CHIUSURA A GANCIO
2	1	AR3301	BOCCHETTONE DBF PVC D60
3	2	AR3576	COPRIRUOTA MISTRAL
4	1	AR3577	RUOTA D80 EGA PIV.C/FR MTL
5	1	AR3578	RUOTA D80 EGA PIV. MTL
6	1	AR3597	FASCETTA FILTRO DIFFUSORE
7	1	AR3599	TUBOFLEX SCARICO LIQUIDI MTL802
8	1	AR3600	CLIPS AGG.TUBOFLEX MTL802
9	1	AR3601	TIRANTE MTL 802WD
10	1	AR3602	TAPPO TUBO LIQUIDI MTL802
11	2	AR4299-KIT	KIT ASSALE RUOTA AR4299
12	2	AR4299	RUOTA D150 MTL POLIPROPILENE ANTIURTO
13	1	AR4671	CONTENITORE D360 540H MTL 501 WD

POS.	Q.TY	CODE	DESCRIPTION
1	1	AR 3578	RUOTA Ø80 EGA PIV. MTL
2	1	AR 3577	RUOTA Ø80 EGA PIV.C/FR MTL
3	2	AR 3453	RUOTA Ø200 PMB GRIGIA MTL WD
4	2	AR 2278	ANELLI CAPPED Ø20
5	2	AR 3576	COPRIRUOTA MTL
6	1	AR 3596	CONTENITORE Ø420 H720 MTL
6A	1	AR 3596X	CONTENITORE Ø420 H720 MTL INOX
7	1	AR4815	FASCETTA Ø25-45
8	1	AR 2418	SALTARELLO BOCCHETTONE PRESSOFUSO
9	1	AR 2416	SPINA BOCCHETTONE PRESSOFUSO
10	1	AR 3491	GUARN.BOCCHETTONE PRESSOFUSO MTL
11	2	AR 2002	CHIUSURA A GANCIO
12	1	AR 3599	TUBOFLEX SCARICO LIQUIDI MTL802
13	1	AR 2417	MOLLA SALTARELLO
14	1	AR 2413	BOCCHETTONE Ø80 PRESSOFUSO
15	1	AR 3600	CLIPS AGG.TUBOFLEX MTL802
16	1	AR 3601	TIRANTE MTL 802WD
17	1	AR 3602	TAPPO PER TUBO LIQUIDI MTL 802
18	1	AR 2415	DEFLETTORE PRESSOFUSO
19	2	AR 3160	IMPUGNATURA PLAST.CARR W/D
20	1	AR 3472	FILTRO NYLON Ø420+ELASTICO MTL
21	1	AR 3582	ANELLO TENDIFILTRO NYLON MTLWD (PLASTIFICATO)
22	1	AR 3473	FILTRO POL G Ø420 MTL WD
23	2	AR 3471	FASCETTA FERMAFILTRO D.420 MTL (8MM/1310)
24	2	AR 3484	ANELLO REGGIFILTRO D420 MTL
24A	2	AR 3484X	ANELLO REGGIFILTRO D420 MTL INOX
25	2	AR 3485	GUARNIZIONE REGGIFILTRO Ø420 MTL
26	1	AR 3587	GABBIA FLOTTEUR MTL W-D (PLASTIFICATA)
27	1	AR 2553	GUARN.GALLEGGIANTE (MOUSSE ADESIVA D.120 Sp.3)
28	1	AR 2015	GALLEGGIANTE
29	1	AR 3589	CICLONE GALLEGGIANTE MTL
30	1	AR 3590	FONDELLO FILTRO-FIBRA MTL 802 WD
31	1	AR 3475	FILTRO FIBRA MTL WD
32	1	AR 3474	FILTRO PPL Ø420 MTL WD

KIT FILTRO PER POLVERI

KIT FILTRO PER LIQUIDI


0.7 MISTRAL
WITH 2
(AA2803)
802 WD

MOTOR HEAD
MOTORS
MODEL MTL



0.7 MISTRAL MOTOR HEAD WITH 2 MOTORS (AA2803)
MODEL MTL 802 WD

POS.	Q.TY	CODE	DESCRIPTION
1	1	AR 4186	ETICHETTA RESINATA LOGO OVALE DELFIN
2	1	AR 3513	VITE T.C.E.I. 8X25
3	1	AR 3514	CALOTTA TESTATA MTL
4	1	AR 3517	SPIA VERDE ALIMENT. MTL + TESTATE ABS
5	1	AR 3515	INSONORIZZ. CALOTTA TESTATA MTL
6	1	AR 3585	COPERCHIO TESTATA MTL WD
7	1	AR 3587	Etichetta in PLCB 802 WD
8	1	AR 2029	CAVO ALIMENTAZIONE 3X2,5 MT.10
9	2	AR 4088	INTERRUTTORE BIPOL. LUMINOSO ROSSO
10	1	AR 3519	SERIE (6 PZ.) INSONORIZZANTI COPERCHIO TESTATA MTL
11	2	AR 4085	ANELLO RAFFREDDAMENTO GOMMA STAMP.SERIE ABS
12	1	AR 3532	DISTANZIALE M/F M8 CH.17 L=119 TESTATA MTL
13	1	AR 3534	FERMAMOTORI MTL
13A	1	AR 3534X	FERMAMOTORI MTL INOX
14	1	AR 3535	SERIE (5 PZ.) INSONORIZZANTI FERMAMOTORI MTL
15	4	AR 2252	AMMORTIZZATORE MOTORE D145X5 H15
16	2	AA 2783	MOTORE BP 240V 50/60HZ 1150W (LAMB ELECTRIC)
17	3	AR 3536	DISTANZIALE F/FM6 L=79 CH13
18	1	AR 3537	DISTANZIALE M/F L=79 CH17
19	1	AR 3538	DISTANZIALE M/M L=79 M10-1/8
20	2	AR 3539	VALVOLA FONDELLO MTL
21	2	AR 3540	FONDELLO APERTO PER MOTORI MTL
21A	2	AR 3540/B	FONDELLO APERTO PER MOTORI MTL INOX
22	1	AR 3542	SERIE(4 PZ.) INSONORIZZANTE BASAMENTO MTL
23	1	AR 3543	BASAMENTO MTL
23A	1	AR 3543X	BASAMENTO MTL INOX
24	1	AR 3477	GUARN.BASAMENTO MTL 3X30 L.1450
25	1	AR 3544	SUPPORTO FERMACAVO SBMMM932



Distributor: